

Slewing Gearboxes



dinamic oil

| | Pag |
|---|-----|
| Generalità / Generality | |
| Riduttori per rotazione / <i>Slewing Gearboxes</i> | A2 |
| Potenziati applicazioni / <i>Potential Applications</i> | A2 |
| Definizioni tecniche / <i>Technical Definitions</i> | A3 |
| Dati tecnici / Technical Data | B1 |
| RE240 | B3 |
| RE310/RE510 | B7 |
| RE610 | B13 |
| RE810 | B17 |
| RE1020 | B21 |
| RE1520/RE2000 | B27 |
| RE2520/RE3000 | B31 |
| RE3510/RE4800 | B35 |
| RE6010/RE8010 | B39 |
| | |

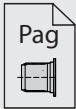

Riduttori per rotazione / *Slewing Gearboxes:*

- Molteplicità di esecuzioni, la più ampia scelta del mercato.
- Costruzione modulare.
- Stadi di riduzione del catalogo standard.
Con stadi da 1 a 6 si ha un ampio range di rapporti.
- Input per motori idraulici ed elettrici (vedi catalogo principale).
- Alte performance e lunga durata con diversi tipi di lubrificazione (olio, grasso).
- Possibilità di montaggio eccentrico per regolare il gioco pignone ralla.
- Esecuzioni speciali su richiesta, per pignoni non a catalogo allegare dati del pignone e della ralla.
- Possibilità di ottenere certificazioni dei maggiori enti Navali (DNV-GL, ABS, RINA, BV, Lloyd, CCS...) in base alla applicazione.
- Selezioni possibili in base alla classe F.E.M. oppure in base allo spettro di carico fornito dal cliente.
- Ruote dentate calcolate con ISO 6336, cuscinetti con ISO 281. Altri metodi di calcolo su richiesta.
- *Multiple versions, the widest choice on the market.*
- *Modular design.*
- *Standard catalogue reduction stages. Wide range of gearbox ratios available from 1 single stage up to 6 stages.*
- *Input for hydraulic and electric motors (see main catalogue).*
- *High performance and long life-time with different types of lubrication (oil, grease).*
- *Output eccentric mounting possibility to adjust the pinion- ring gear backlash/clearance.*
- *Special design available on request. For pinion designs not available in the catalogue please provide pinion and ring gear complete data.*
- *Main naval bodies certifications available on demand (DNV-GL, ABS, RINA, BV, Lloyd, CCS...) depending on the application.*
- *Gearboxes selection in accordance with F.E.M. class or with the load spectrum provided by the customer.*
- *Gear wheels calculated with ISO 6336 and bearings with ISO 281. Other calculation methods available on request.*

Potenziali applicazioni / *Potential Applications:*

- Piattaforme aeree
- Riduttori da azimut & pitch per turbine eoliche
- Macchine posatubi
- Escavatori
- Gru edili e nastri trasportatori
- Carriponte e container
- Gru da cantieri e portuali
- Gru di carico e movimentazione merce
- Gru mobili
- Gru offshore
- Gru di bordo
- Frese da tunnel (TBM)
- Turbine eoliche
- *Access platforms*
- *Azimuth & pitch drives for wind turbines*
- *Trencher*
- *Excavators*
- *Construction cranes and conveyors*
- *Container gantries*
- *Dockyard and harbour cranes*
- *Loading and cargo handling cranes*
- *Mobile cranes*
- *Offshore cranes*
- *Deck cranes*
- *Tunnel drilling machines (TBM)*
- *Wind turbines*

Definizioni tecniche / Technical Definitions:

| Simboli Symbols | Unità di misura Unit of measure | Descrizione | Description |
|---|--|--|--|
| i_e | - | Rapporto di riduzione | <i>Reduction ratio</i> |
| $T_2\text{max Static}$ (1) (support) | [Nm] | Coppia massima statica (100% R_s , coppia di snervamento) | <i>Max static torque (100%R_s, yield torque)</i> |
| $T_2\text{max Dynamic}$ (support) | [Nm] | Coppia massima dinamica (90% R_s , coppia di snervamento) | <i>Max dynamic torque (90%R_s, yield torque)</i> |
| T_{2FEM} (2) | [Nm] | Coppia in uscita dell'ingranaggeria a secondo F.E.M. M5(L2-T5) a 15rpm | <i>Nominal gear output torque according to F.E.M. M5(L2-T5) at 15rpm</i> |
|  | - | Alberi - rimando a pagina | <i>Shafts - reference page</i> |
|  | - | Pignoni - rimando a pagina | <i>Pinions - reference page</i> |

(1) La coppia massima statica **$T_2\text{max Static}$** , non può essere superata per alcuna ragione. Nel caso di superamento accidentale è necessaria una revisione completa del riduttore.

(2) Valori indicativi.
Valutare caso per caso, contattare l'Ufficio Tecnico Commerciale Dinamic Oil.

(Support)
I valori di coppia sono relativi al solo supporto d'uscita. Devono essere confrontati con i valori di coppia massima dell'ingranaggeria (**$T_2\text{max}$** catalogo riduttori standard) e scelto il valore più basso. In caso di dubbio, contattare l'Ufficio Tecnico Commerciale Dinamic Oil.

(1) *The Max Static Torque **$T_2\text{max Static}$** , cannot be exceeded for any reason. In case of accidental excess, it is necessary a gearbox complete inspection.*

(2) *Indicative value.
To evaluate case by case, contact Dinamic Oil's Technical Service.*

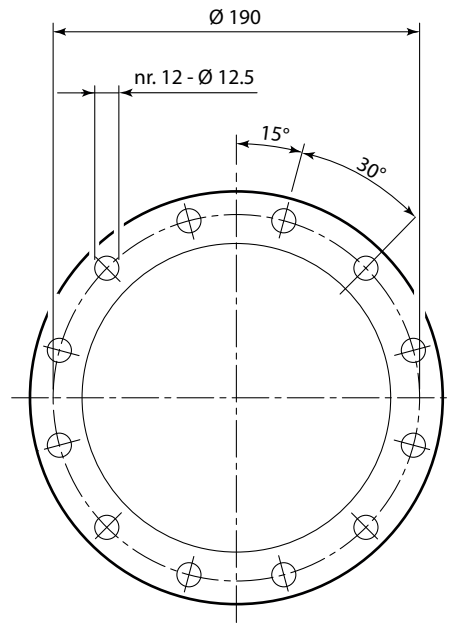
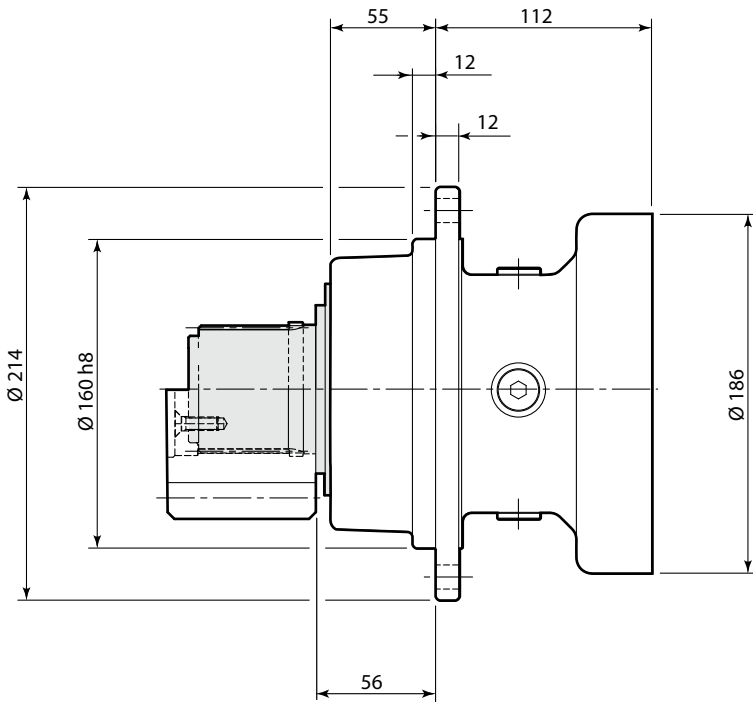
(Support)
*The torque values are related to the output support only. They have to be compared with the max torque values of the gearset (**$T_2\text{max}$** on our standard gearbox catalogue) and the lower value has to be selected. In case of doubt, contact Dinamic Oil's Technical Service.*

| Tipo Type | Supporto Support | Albero Shaft [mm] | T _{2FEM} (L2 T5, n ₂ =15 rpm) [Nm] | i _e | |
|--------------|---------------------|-------------------------|--|----------------|----------|
| | | | | 2 std | 3 std |
| RE 240 | DBS | DIN 5482 B58x53 | 2470 ÷ 4350 | 13 ÷ 39 | 46 ÷ 281 |
| | Tecc | | | | |
| RE 310 | NR | DIN 5482 B58x53 | 2310 ÷ 5420 | 13 ÷ 54 | 44 ÷ 321 |
| | NR3 | | | | |
| | Tecc | | | | |
| | T6 | | | | |
| | T8 | | | | |
| | T18 | DIN 5482 B70x64 | | | |
| | DBS | DIN 5482 B58x53 | | | |
| RE 510 | NR | DIN 5482 B58x53 | 4620 ÷ 10800 | 13 ÷ 54 | 44 ÷ 321 |
| | NR3 | | | | |
| | Tecc | | | | |
| | T6 | | | | |
| | T8 | | | | |
| | T18 | DIN 5482 B70x64 | | | |
| | DBS | DIN 5482 B58x53 | | | |
| RE 610 | T18 | DIN 5482 B70x64 | 8200 ÷ 12400 | 14 ÷ 34 | 50 ÷ 245 |
| | DBS | | | | |
| | DBS2 | | | | |
| RE 810 | Tecc | DIN 5482 B70x64 | 7360 ÷ 15800 | 13 ÷ 51 | 53 ÷ 314 |
| | TRecc | | | | |
| RE 1020 | TR | DIN 5482 B80x74 | 10800 ÷ 22800 | 13 ÷ 5 | 53 ÷ 314 |
| | T6ecc | | | | |
| | DBS | | | | |
| | Z | | | | |
| | DBS4 | | | | |
| | DBT | | | | |
| RE 1520 | Tecc | DIN 5482 B80x74 | 18800 ÷ 33500 | 15 ÷ 47 | 51 ÷ 278 |
| | DBS | DIN 5482 B100x94 | | | |
| | Z | DIN 5482 B80x74 | | | |
| | DBT | DIN 5482 B80x74 | | | |
| RE 2000 | Tecc | DIN 5482 B80x74 | 20900 ÷ 41300 | 14 ÷ 39 | 48 ÷ 202 |
| | DBS | DIN 5482 B100x94 | | | |
| | Z | DIN 5482 B100x94 | | | |
| | DBT | DIN 5482 B80x74 | | | |
| RE 2520 | DBS | DIN 5482 B100x94 | 31100 ÷ 48100 | 14 ÷ 47 | 32 ÷ 51 |
| | Z | | | | |
| | Z1 | | | | |
| RE 3000 | DBS | DIN 5482 B100x94 | 44500 ÷ 65500 | 14 ÷ 32 | 51 ÷ 242 |
| | Z | | | | |
| | Z1 | | | | |
| RE 3510 | Z2 | DIN 5480 W120x3 | 47500 ÷ 71800 | 14 ÷ 44 | 49 ÷ 332 |
| | Z3 | DIN 5480 W150x5 | | | |
| | DBS1 | DIN 5480 W120x3 | | | |
| | HR | DIN 5480 W120x3 | | | |
| RE 4800 | Z2 | DIN 5480 W120x3 | 71000 ÷ 105000 | 13 ÷ 32 | 47 ÷ 242 |
| | Z3 | DIN 5480 W150x5 | | | |
| | DBS1 | DIN 5480 W120x3 | | | |
| | HR | DIN 5480 W120x3 | | | |
| RE 6010 | Z1 | DIN 5480 W150x5 | 64200 ÷ 122000 | 14 ÷ 40 | 64 ÷ 252 |
| | Z4 | | | | |
| RE 8010 | Z1 | DIN 5480 W150x5 | 126500 ÷ 163500 | 15 ÷ 29 | 57 ÷ 200 |
| | Z4 | | | | |

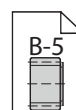
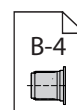
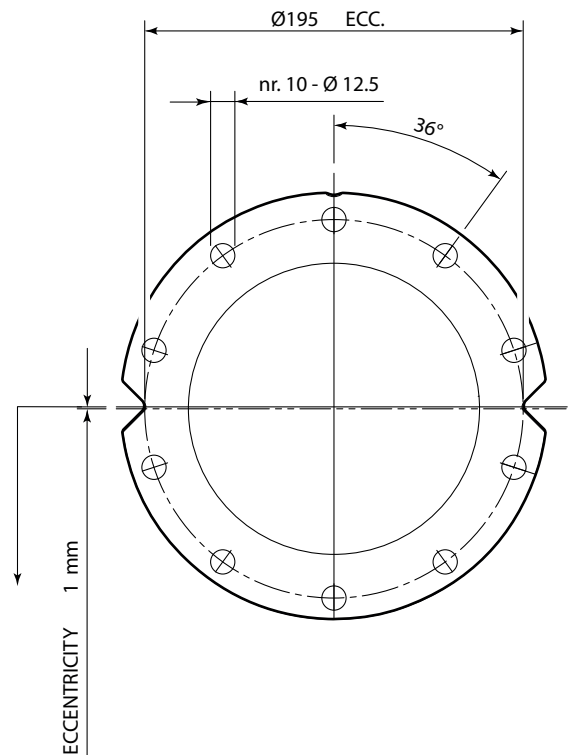
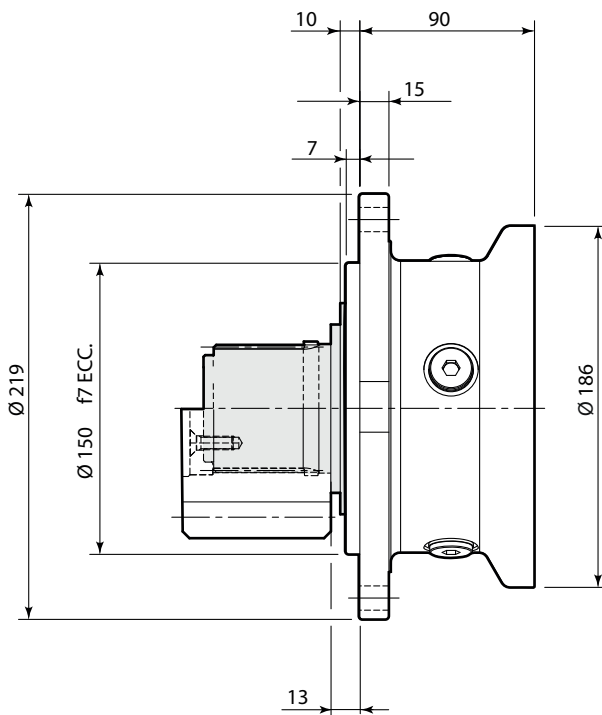
| Tipo Type | Supporto Support | Albero Shaft [mm] | T _{2FEM} (L2 T5, n ₂ =15 rpm) [Nm] | i _e | |
|-------------------|---|-------------------------|--|----------------|------------|
| | | | | 3 std | 4 std |
| GB 12010 * | Contattare il Vostro referente in DINAMIC OIL. <i>Please refer to your DINAMIC OIL representative.</i> | | 130000 ÷ 195000 | 53 ÷ 222 | 210 ÷ 1508 |
| GB 16000 * | Contattare il Vostro referente in DINAMIC OIL. <i>Please refer to your DINAMIC OIL representative.</i> | | 183500 ÷ 297000 | 50 ÷ 165 | 181 ÷ 1241 |
| GB 21000 * | Contattare il Vostro referente in DINAMIC OIL. <i>Please refer to your DINAMIC OIL representative.</i> | | 277000 ÷ 360000 | 58 ÷ 140 | 233 ÷ 766 |
| GB 26000 * | Contattare il Vostro referente in DINAMIC OIL. <i>Please refer to your DINAMIC OIL representative.</i> | | 352000 ÷ 460000 | 58 ÷ 108 | 210 ÷ 745 |

* Per ulteriori informazioni contattare l'Ufficio Tecnico DINAMIC OIL / For ather informations, please contact Technical Department DINAMIC OIL

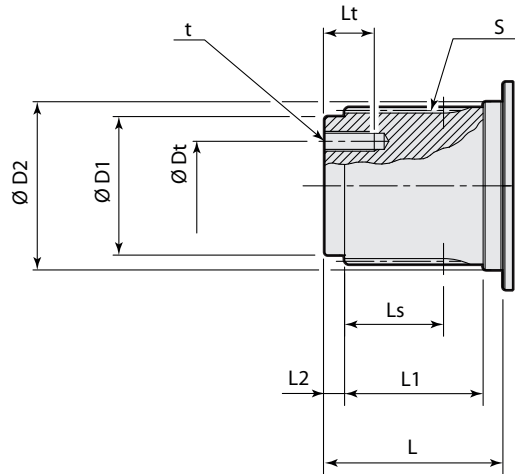
Supporto / Support: DBS



Supporto / Support: Tecc

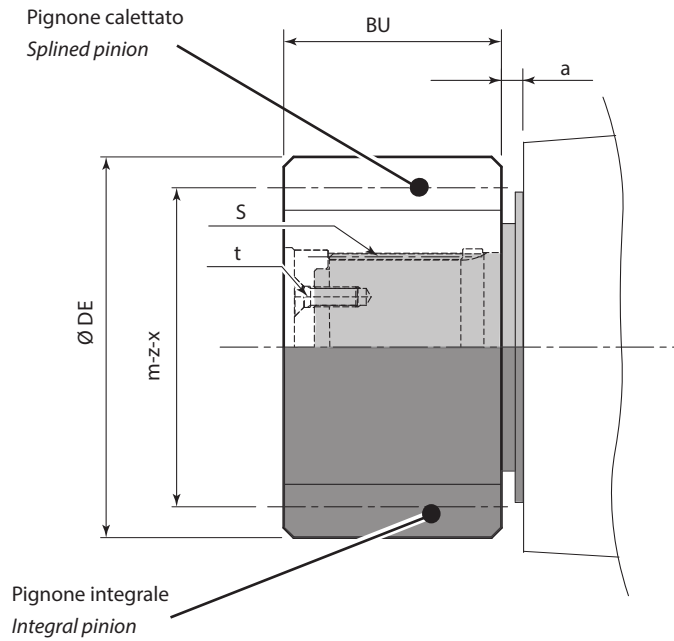


Albero scanalato / Splined shaft:



| Supporto Support | ØD1 | ØD2 | S | Ls | L | L1 | L2 | t | ØDt | Lt |
|---------------------|--------|-------|-------------------|----|------|----|----|---------------|-----|----|
| | [mm] | | | | | | | | | |
| DBS | 50 h7 | 60 h6 | DIN5482 B58x53 | 37 | 68.3 | 50 | 8 | M10 (n° 3) | 32 | 21 |
| Tecc | 50 h7 | 60 h6 | DIN5482 B58x53 | 37 | 68.3 | 50 | 8 | M10 (n° 3) | 32 | 21 |

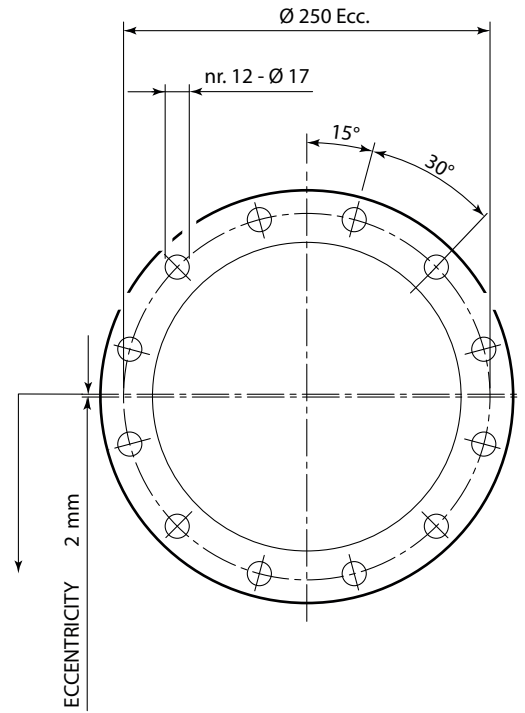
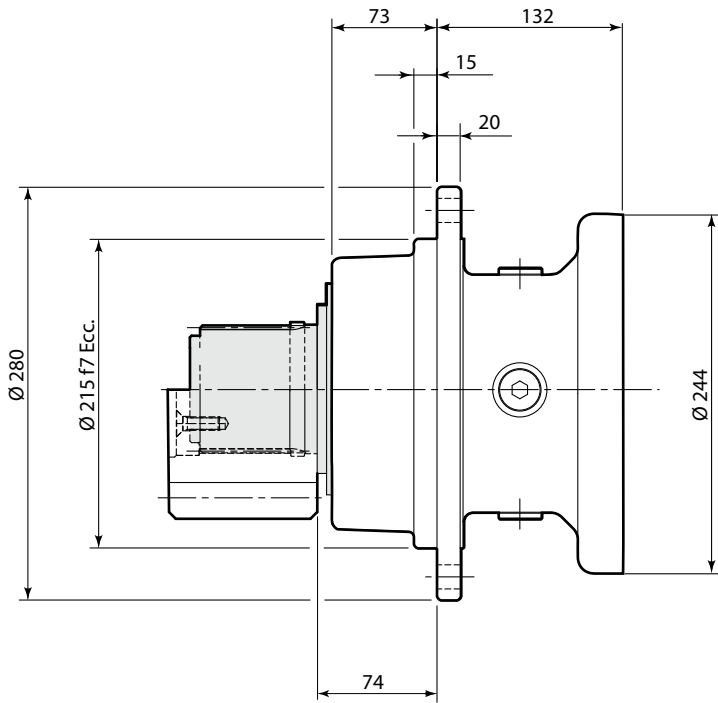
Pignoni / Pinions:



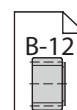
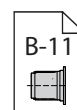
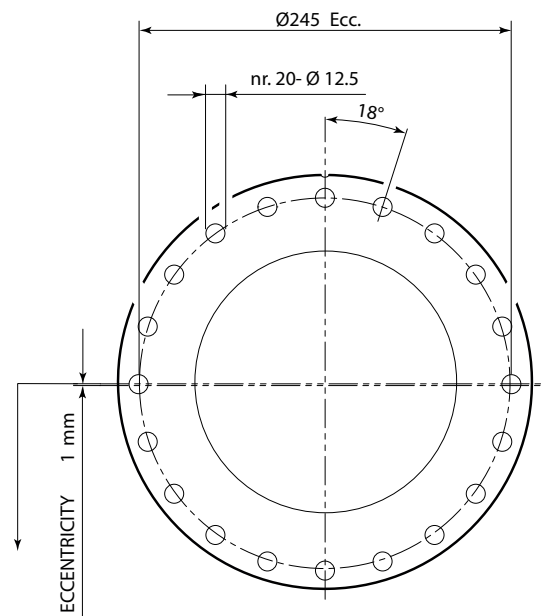
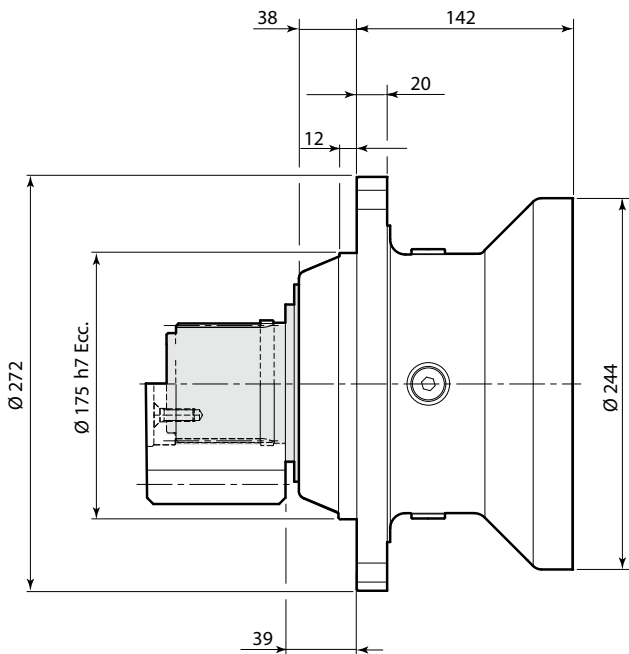
| Supporto Support | m | z | x | ØDE | BU | a | S | t | Tmax | |
|---------------------|------|----|-----|------|----|------|-------------------|---------------|------|----------------|
| | [mm] | | | | | | | | | Static [Nm] |
| DBS | 6 | 15 | 0.5 | 108 | 88 | 2 | - | - | 6000 | 5400 |
| | 8 | 9 | 0.5 | 95.2 | 96 | 0.5 | - | - | 5000 | 4500 |
| | 10 | 11 | 0.5 | 137 | 68 | 2 | - | - | 6300 | 5670 |
| | 14 | 13 | 0.5 | 224 | 70 | 2 | DIN5482 B58x53 | M10 (n° 3) | 6300 | 5670 |
| Tecc | 6 | 18 | 0 | 120 | 70 | 13.5 | DIN5482 B58x53 | M10 (n° 3) | 6000 | 5400 |
| | 8 | 10 | 0.5 | 104 | 80 | 13.5 | - | - | 5000 | 4500 |
| | 8 | 14 | 0.5 | 136 | 80 | 23.5 | DIN5482 B58x53 | M10 (n° 3) | 6300 | 5670 |
| | 10 | 13 | 0 | 150 | 80 | 3.5 | DIN5482 B58x53 | M10 (n° 3) | 6300 | 5670 |
| | 14 | 13 | 0.5 | 224 | 70 | 2 | DIN5482 B58x53 | M10 (n° 3) | 6500 | 5670 |

| | |
|--|--|
| | Pignone calettato / <i>Splined pinion</i> |
| | Pignone integrale / <i>Integral pinion</i> |

Supporto / Support: DBS

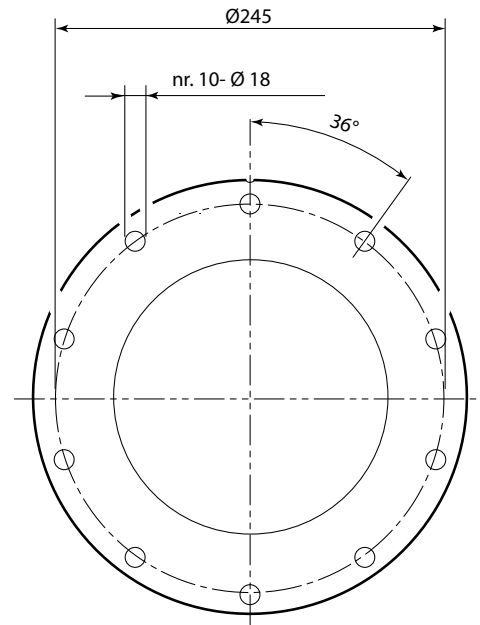
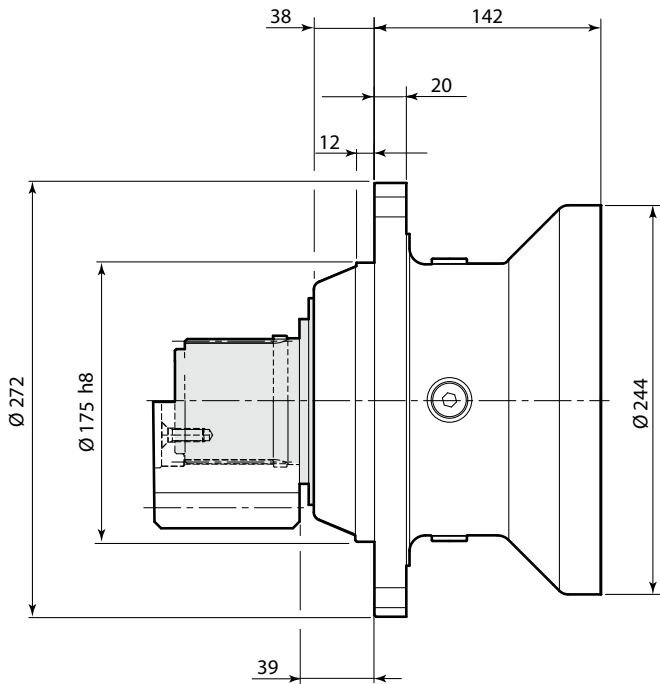


Supporto / Support: Tecc

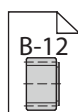
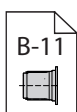
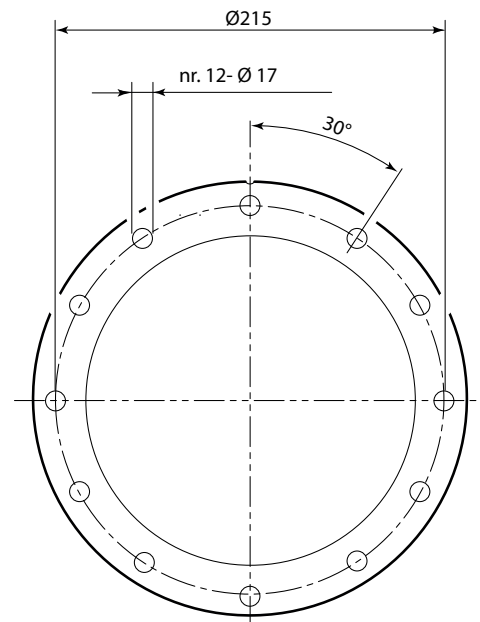
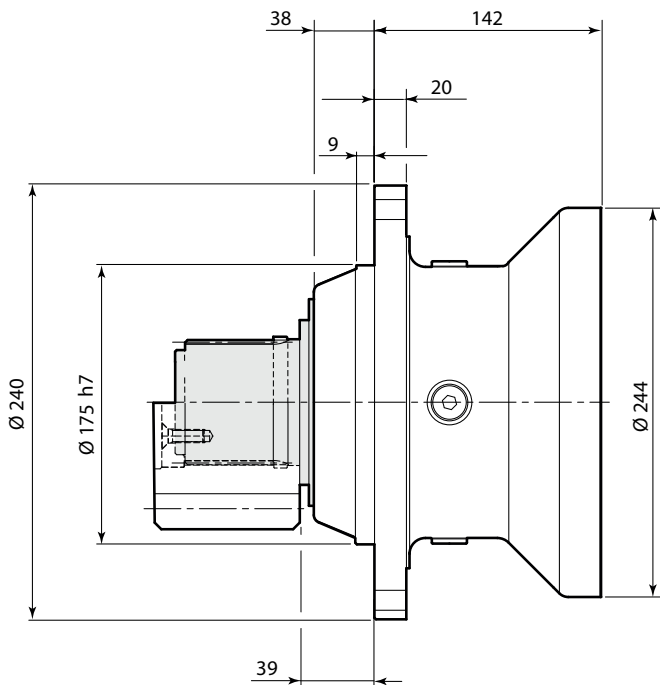


T₂FEM
2310 ÷ 5420 Nm
4620 ÷ 10800 Nm

Supporto / Support: T6

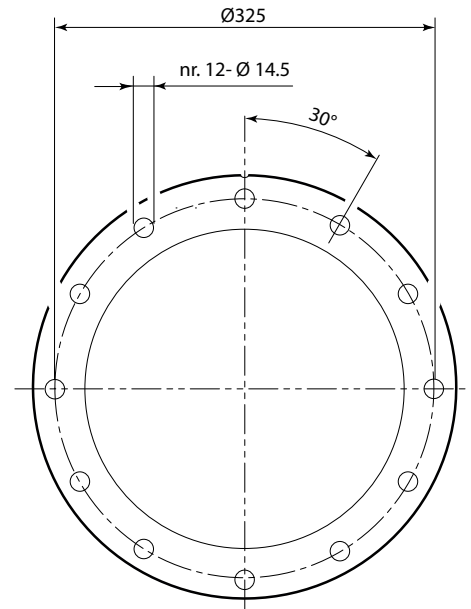
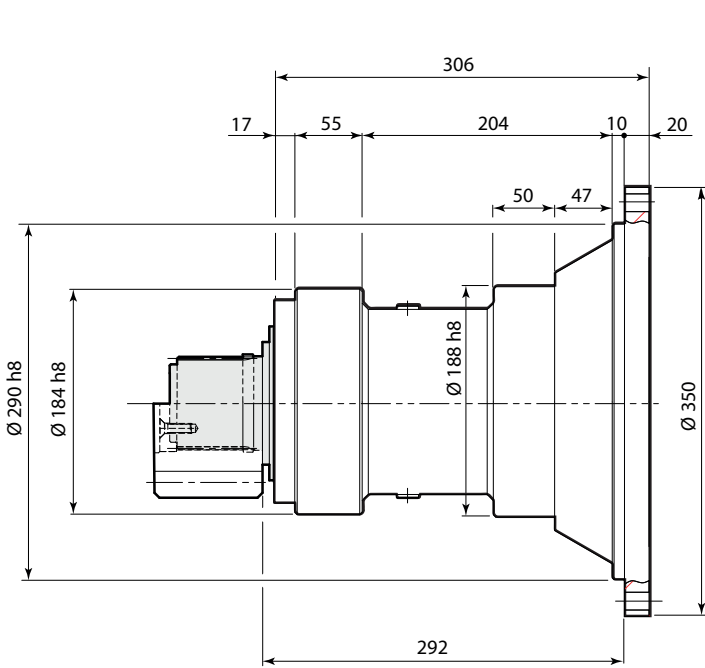


Supporto / Support: T8

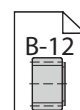
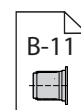
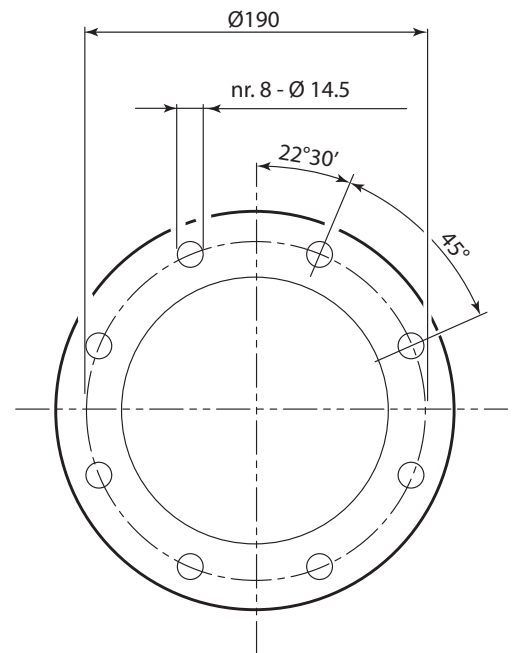
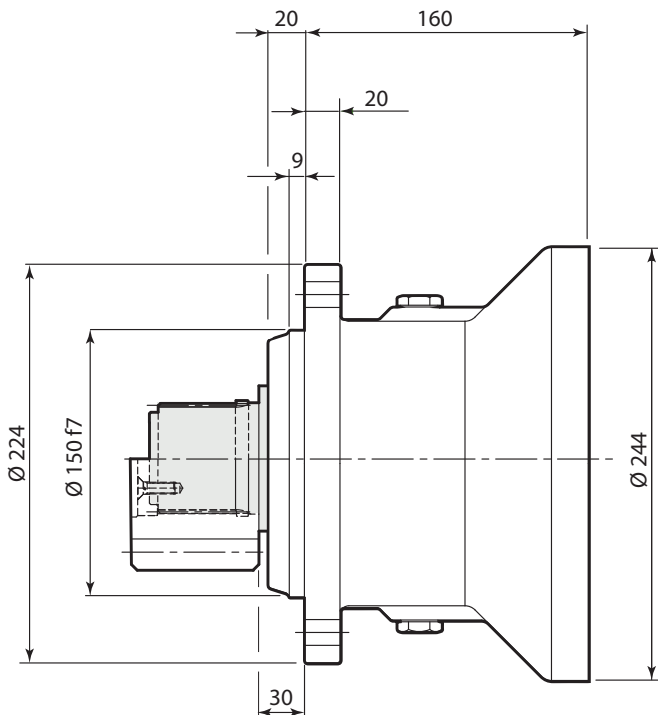


Supporto / Support: T18

T_{2FEM}
2310 ÷ 5420 Nm
4620 ÷ 10800 Nm

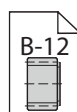
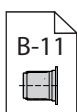
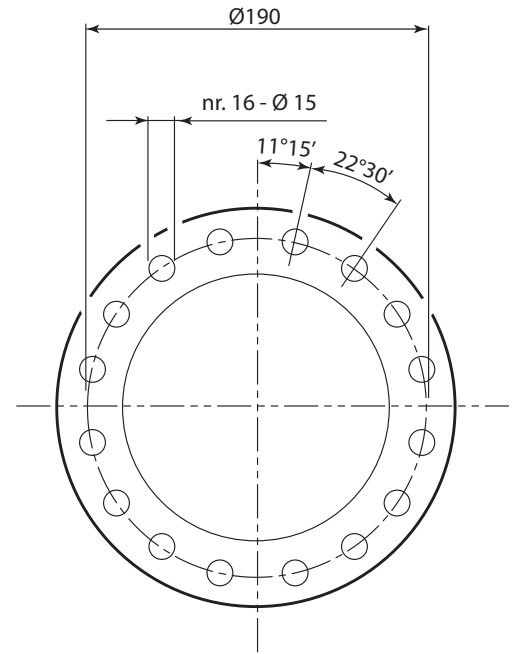
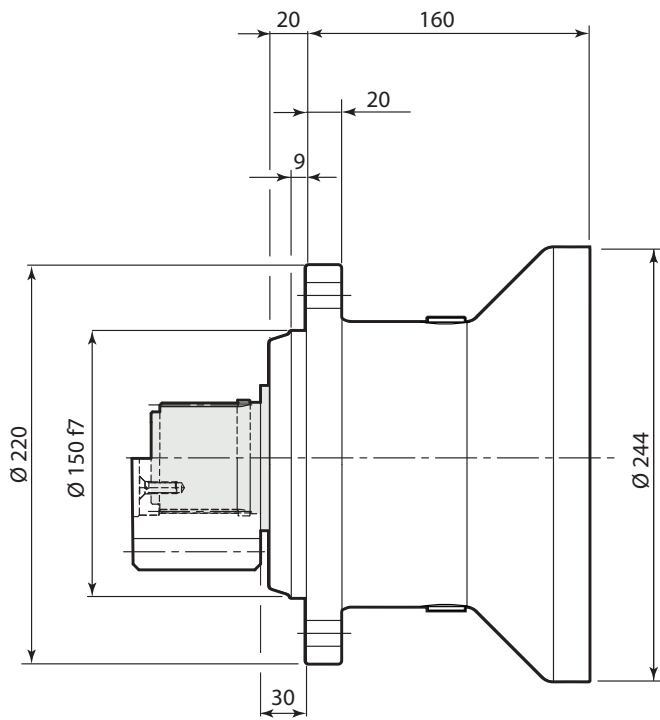


Supporto / Support: NR

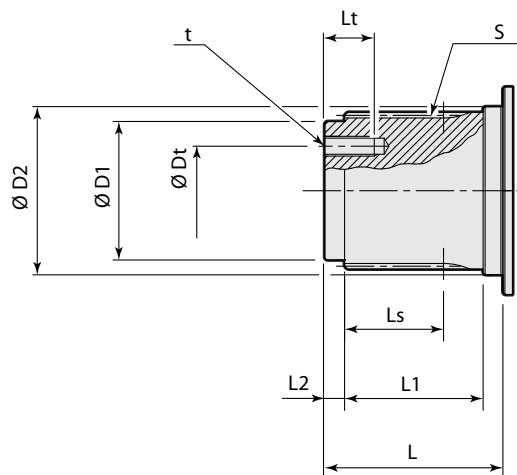


T_{2FEM}
2310 ÷ 5420 Nm
4620 ÷ 10800 Nm

Supporto / Support: NR3



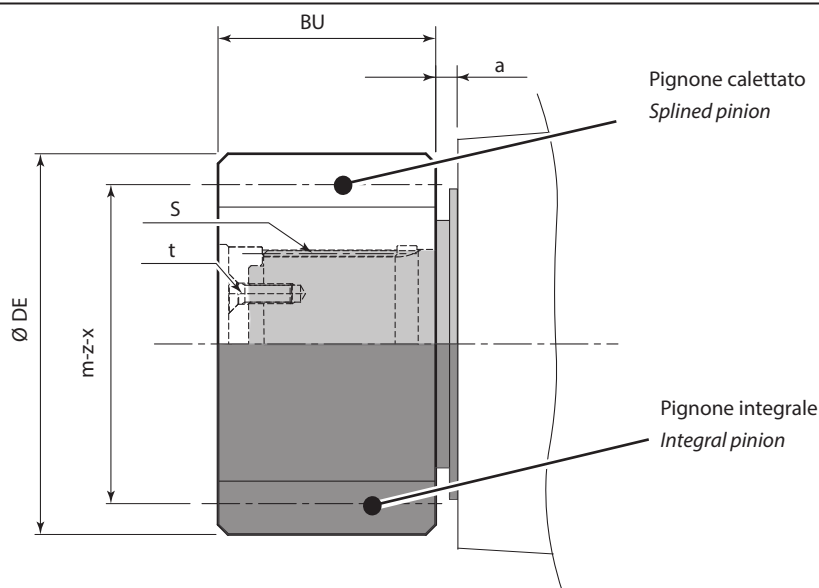
Albero / Shaft:



| Supporto Support | $\varnothing D1$ | $\varnothing D2$ | S | L_s | L | L1 | L2 | t | $\varnothing Dt$ | Lt |
|---------------------|------------------|------------------|-------------------|-------|------|----|----|---------------|------------------|----|
| | [mm] | | | | | | | | | |
| DBS | 50 h7 | 60 h6 | DIN5482 B58x53 | 46 | 78 | 60 | 8 | M10 (n° 3) | 32 | 20 |
| Tecc | 50 h7 | 60 h6 | DIN5482 B58x53 | 46 | 78 | 60 | 8 | M10 (n° 3) | 32 | 20 |
| T6 | 50 h7 | 60 h6 | DIN5482 B58x53 | 46 | 78 | 60 | 8 | M10 (n° 3) | 32 | 20 |
| T8 | 50 h7 | 60 h6 | DIN5482 B58x53 | 46 | 78 | 60 | 8 | M10 (n° 3) | 32 | 20 |
| T18 | 62 F7 | 72 F7 | DIN5482 B70x64 | 51 | 90 | 70 | 10 | M10 (n° 3) | 40 | 22 |
| NR | 50 h7 | 60 h6 | DIN5482 B58x53 | 37 | 68.5 | 50 | 8 | M10 (n° 3) | 32 | 20 |
| NR3 | 50 h7 | 60 h6 | DIN5482 B58x53 | 37 | 68.5 | 50 | 8 | M10 (n° 3) | 32 | 20 |

T_{2FEM}
2310 ÷ 5420 Nm
4620 ÷ 10800 Nm

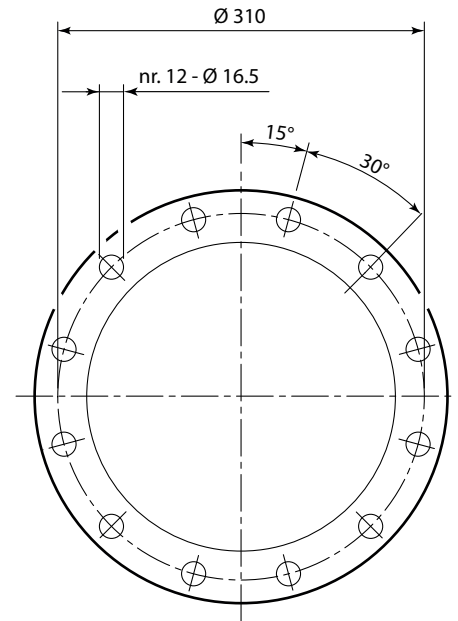
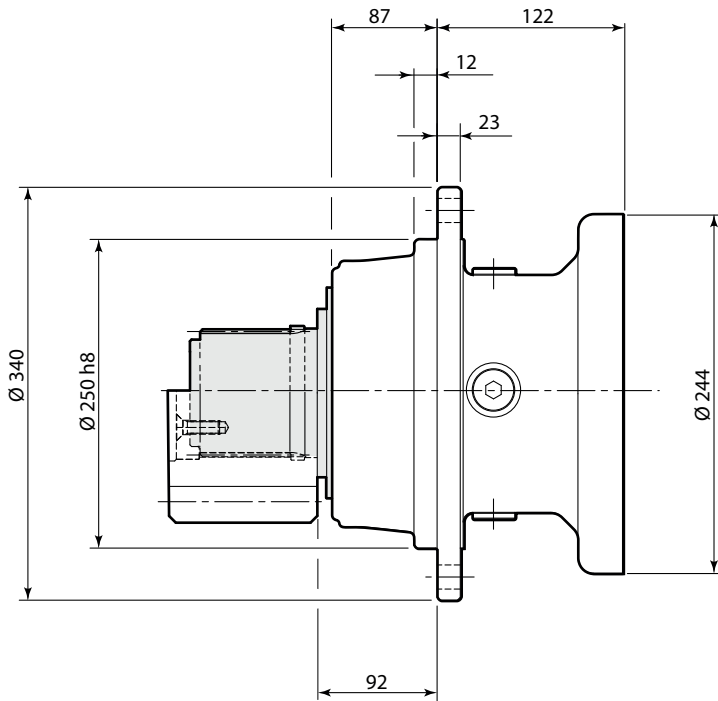
Pignoni / Pinions:



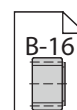
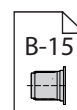
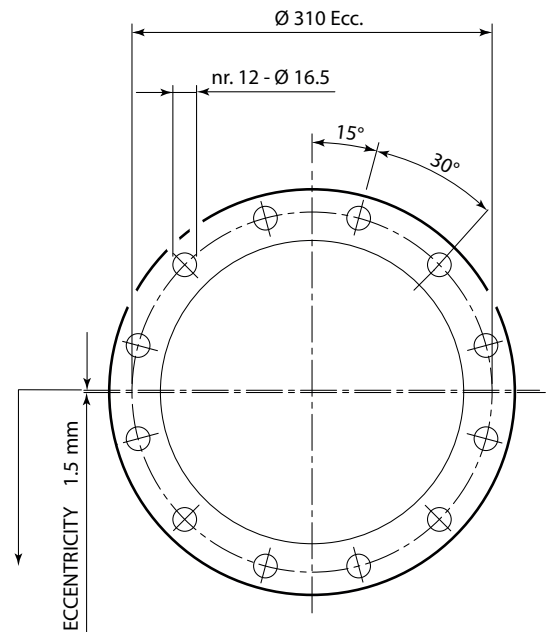
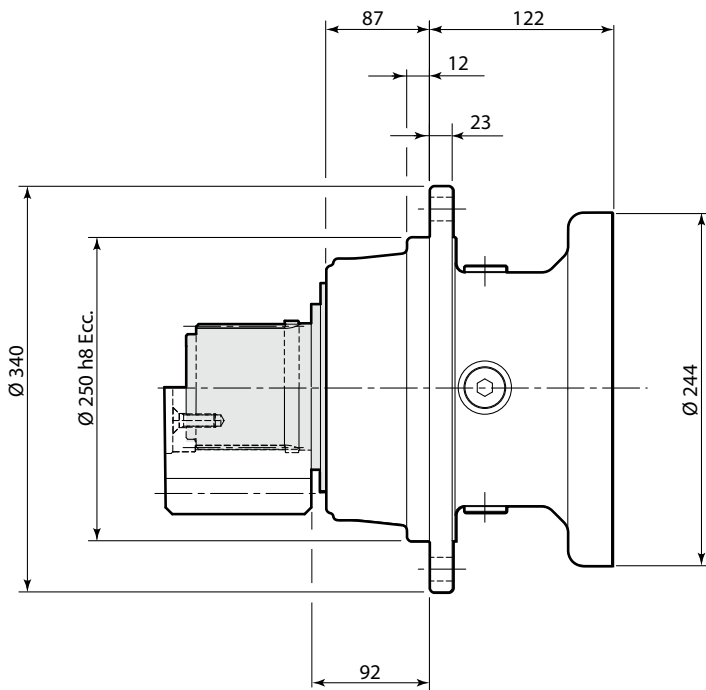
| | |
|--|--|
| | Pignone calettato / <i>Splined pinion</i> |
| | Pignone integrale / <i>Integral pinion</i> |

| Supporto Support | m | z | x | ØDE | BU | a | S | t | Tmax | |
|------------------|------|----|------|-------|------|------|-------------------|---------------|-------|-------------|
| | [mm] | | | | | | | | | Static [Nm] |
| DBS | 8 | 11 | 0.5 | 112.2 | 78 | 7 | - | - | 10500 | 9450 |
| | 9 | 13 | 0.5 | 144 | 75 | 7 | - | - | 10500 | 9450 |
| | 10 | 11 | 0.5 | 137 | 78 | 7 | - | - | 10500 | 9450 |
| | 10 | 15 | 0 | 170 | 90 | 10 | - | - | 10500 | 9450 |
| | 12 | 10 | 0.5 | 155 | 95 | 7 | - | - | 10500 | 9450 |
| | 12 | 11 | 0.5 | 166.8 | 80 | 7 | - | - | 10500 | 9450 |
| Tecc | 6 | 13 | 0.65 | 97.2 | 65 | 27 | - | - | 6900 | 6210 |
| | 8 | 11 | 0.5 | 111.2 | 88 | 4 | - | - | 8300 | 7470 |
| | 8 | 15 | 0 | 136 | 75 | 11 | DIN5482 B58x53 | M10 (n° 3) | 10400 | 9360 |
| | 10 | 10 | 0.5 | 130 | 90 | 3 | - | - | 9500 | 8550 |
| | 14 | 14 | 0.5 | 236.6 | 100 | 1 | DIN5482 B58x53 | M10 (n° 3) | 10500 | 9450 |
| T6 T8 | 10 | 13 | 0.6 | 161 | 86 | 17 | - | - | 10500 | 9450 |
| | 10 | 14 | 0.5 | 168 | 80 | 2.5 | - | - | 10500 | 9450 |
| | 10 | 12 | 0.55 | 150.5 | 93 | 3 | - | - | 10500 | 9450 |
| | 12 | 10 | 0.5 | 155 | 108 | 5.5 | - | - | 10500 | 9450 |
| T18 | 8 | 14 | 0 | 128 | 79.5 | 16 | DIN5482 B70x64 | M10 (n° 3) | 10500 | 9450 |
| | 10 | 14 | 0.32 | 166.4 | 90 | 15 | | | 13200 | 11880 |
| | 12 | 13 | 0.5 | 192 | 80 | 21 | | | 13200 | 11880 |
| | 14 | 15 | 0.5 | 250.6 | 105 | 6 | | | 13200 | 11880 |
| NR NR3 | 5 | 22 | 0 | 120 | 50 | 27.5 | DIN5482 B58x53 | M10 (n° 3) | 9250 | 8325 |
| | 8 | 11 | 0.5 | 110.8 | 79 | 10.5 | - | - | 9250 | 8325 |
| | 8 | 16 | 0.5 | 149.5 | 73 | 20.5 | - | - | 9250 | 8325 |
| | 10 | 11 | 0.5 | 139 | 100 | 12 | - | - | 9250 | 8325 |
| | 10 | 12 | 0.5 | 149 | 90 | 19.5 | - | - | 9250 | 8325 |

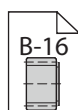
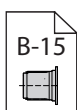
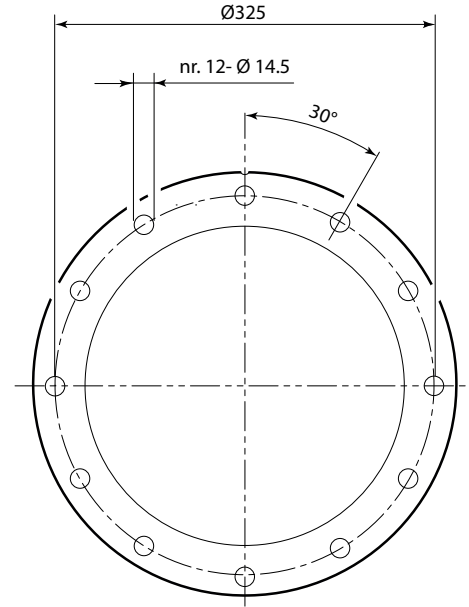
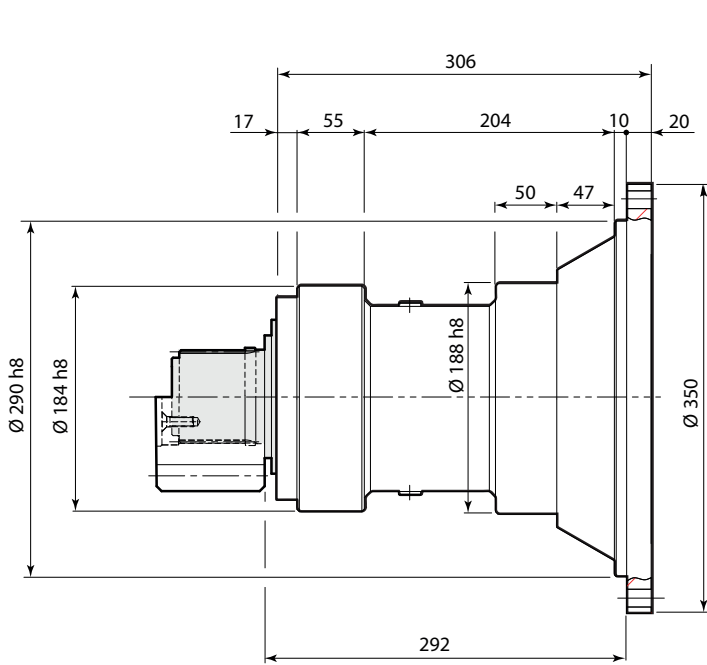
Supporto / Support: DBS



Supporto / Support: DBS2

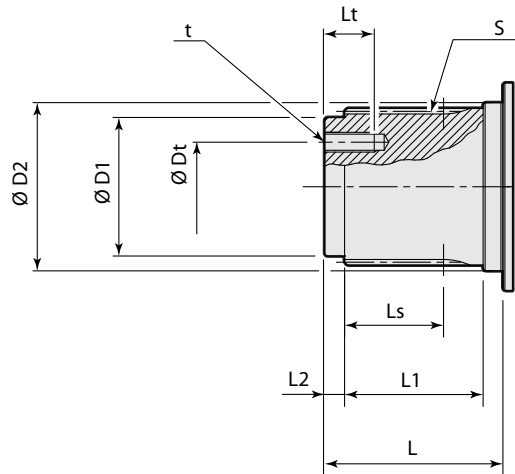


Supporto / Support: T18



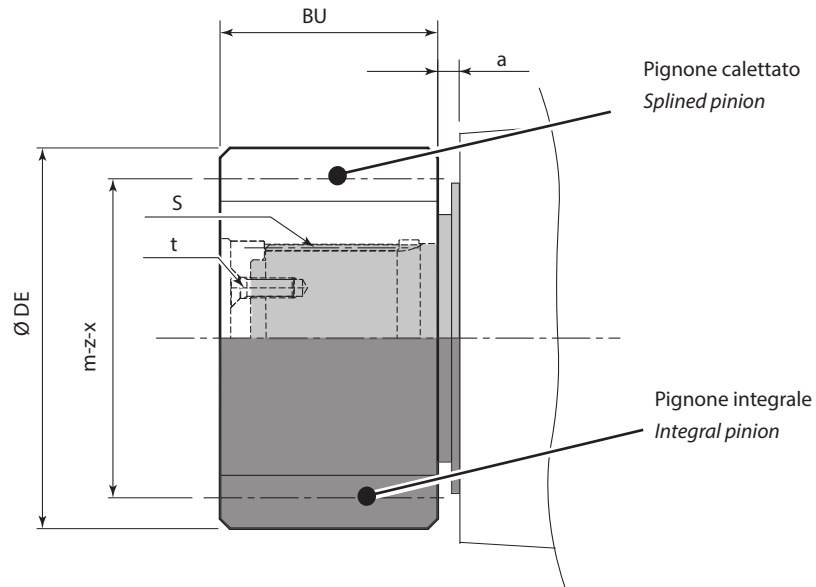
Albero / Shaft:

T_{2FEM}
8200 ÷ 12400 Nm



| Supporto Support | $\varnothing D1$ | $\varnothing D2$ | S | L_s | L | L1 | L2 | t | $\varnothing Dt$ | Lt |
|---------------------|------------------|------------------|-------------------|-------|----|----|----|---------------|------------------|----|
| | [mm] | | | | | | | | | |
| DBS | 62 h7 | 72 h6 | DIN5482 B70x64 | 51 | 90 | 70 | 10 | M10 (n° 3) | 40 | 22 |
| DBS2 | 62 h7 | 72 h6 | DIN5482 B70x64 | 51 | 90 | 70 | 10 | M10 (n° 3) | 40 | 22 |
| T18 | 62 f7 | 72 f7 | DIN5482 B70x64 | 51 | 90 | 70 | 10 | M10 (n° 3) | 40 | 22 |

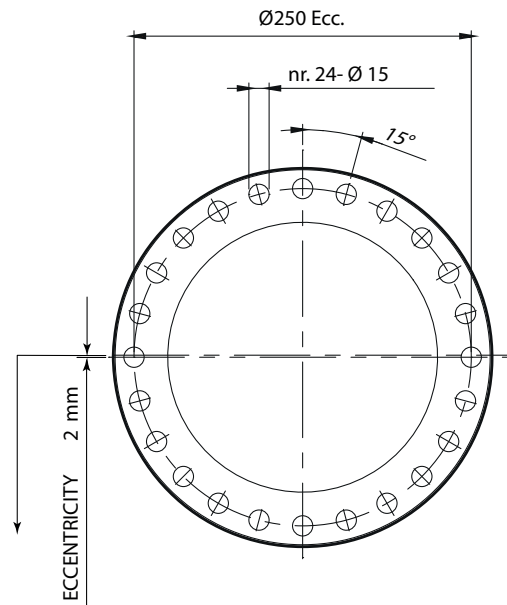
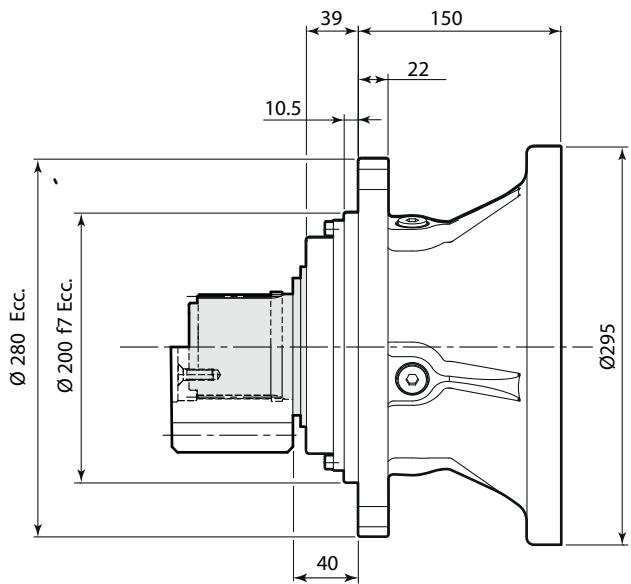
Pignoni / Pinions:



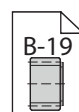
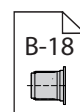
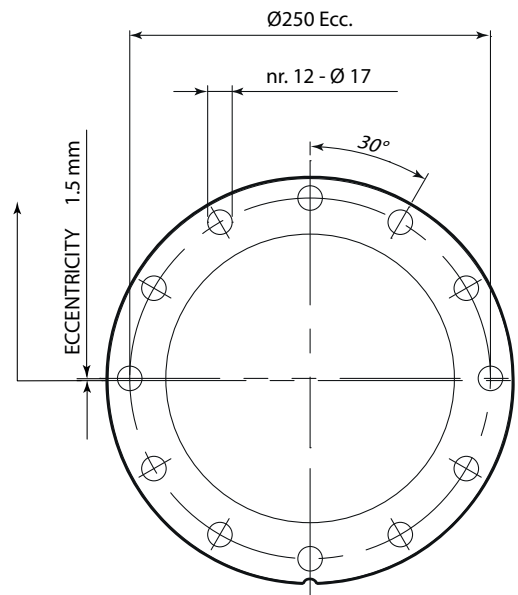
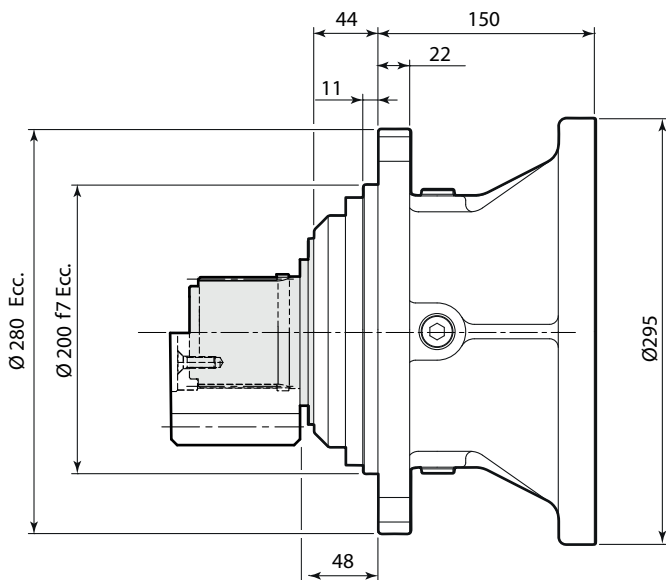
| Supporto Support | m | z | x | ØDE | BU | a | S | t | Tmax | |
|---------------------|------|----|-------|--------|------|----|--------------------|---------------|-------|-------------|
| | [mm] | | | | | | | | | Static [Nm] |
| DBS DBS2 | 8 | 14 | 0 | 128 | 79.5 | 15 | DIN 5482 B70x64 | M10 (n° 3) | 17500 | 15750 |
| | 10 | 12 | 0.5 | 150 | 78 | 5 | - | - | 21500 | 19350 |
| | 10 | 13 | 0.5 | 160 | 85 | 19 | DIN 5482 B70x64 | M10 (n° 3) | 21000 | 18900 |
| | 10 | 14 | 0.5 | 170 | 90 | 5 | - | - | 24000 | 21600 |
| | 12 | 10 | 0 | 144 | 100 | 5 | - | - | 18500 | 16650 |
| | 12 | 12 | 0.5 | 180 | 100 | 5 | DIN 5482 B70x64 | M10 (n° 3) | 24000 | 21600 |
| | 12 | 14 | 0.5 | 204 | 105 | 5 | - | - | 24000 | 21600 |
| | 14 | 11 | 0.5 | 194.6 | 105 | 4 | - | - | 24000 | 21600 |
| T18 | 8 | 20 | 0 | 176 | 115 | 15 | DIN 5482 B70x64 | M10 (n° 3) | 14500 | 13050 |
| | 10 | 11 | 0.681 | 141 | 85 | 6 | - | - | 12000 | 10800 |
| | 12 | 10 | 0.5 | 156 | 120 | 6 | - | - | 12000 | 10800 |
| | 12 | 11 | 0.525 | 168.61 | 110 | 6 | - | - | 13500 | 12150 |

| | |
|--|-------------------------------------|
| | Pignone calettato / Splined pinion |
| | Pignone integrale / Integral pinion |

Supporto / Support: Tecc

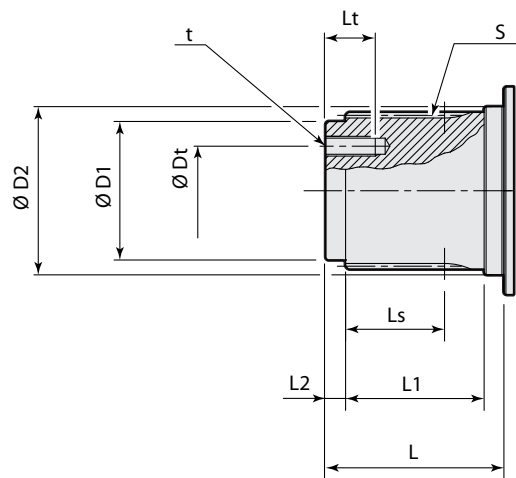


Supporto / Support: TRecc



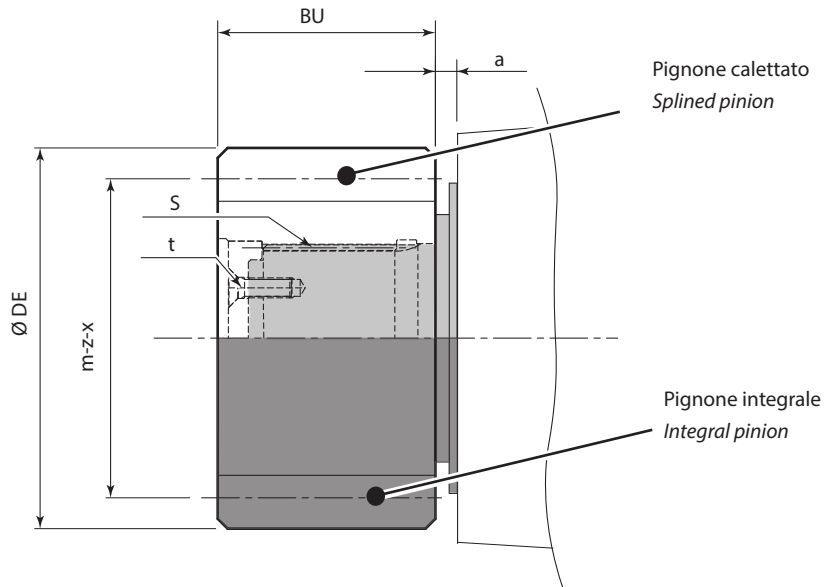
T_{2FEM}
7360 ÷ 15800 Nm

Albero / Shaft:



| Supporto Support | $\varnothing D_1$ | $\varnothing D_2$ | S | L_s | L | L1 | L2 | t | $\varnothing D_t$ | Lt |
|---------------------|-------------------|-------------------|-------------------|-------|----|----|----|---------------|-------------------|----|
| | [mm] | | | | | | | | | |
| Tecc | 62 f7 | 72 f7 | DIN5482 B70x64 | 51 | 90 | 70 | 10 | M10 (n° 3) | 40 | 22 |
| TRecc | | | | | | | | | | |

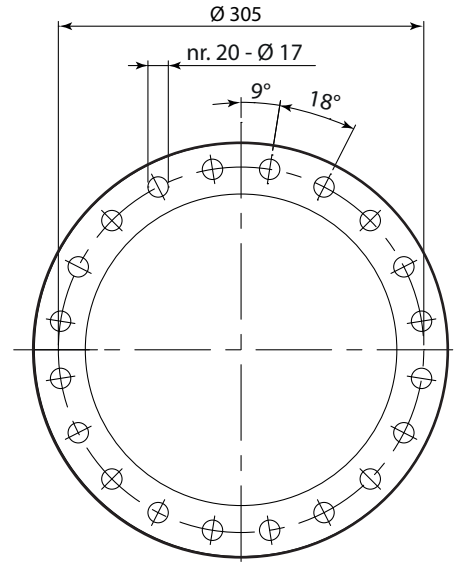
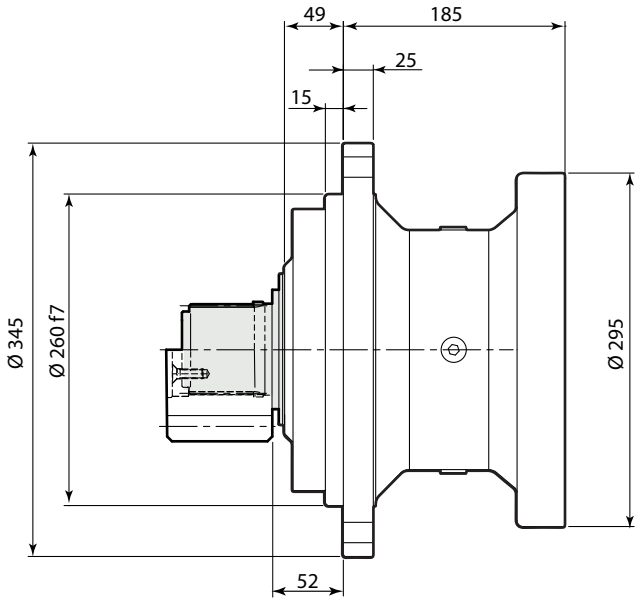
Pignoni / Pinions:



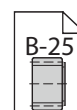
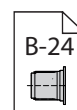
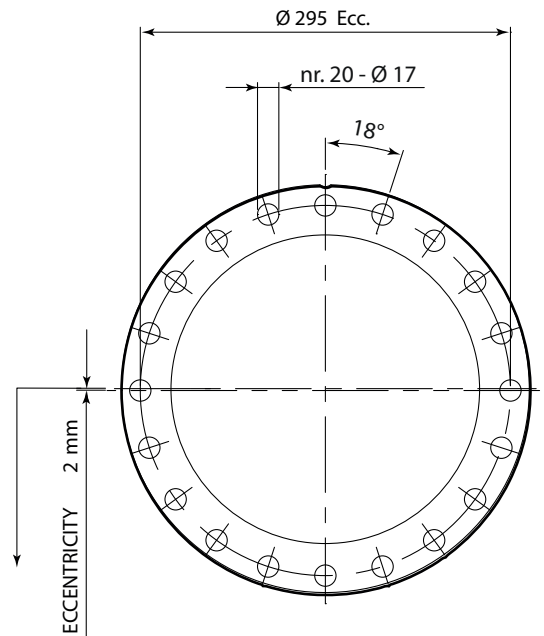
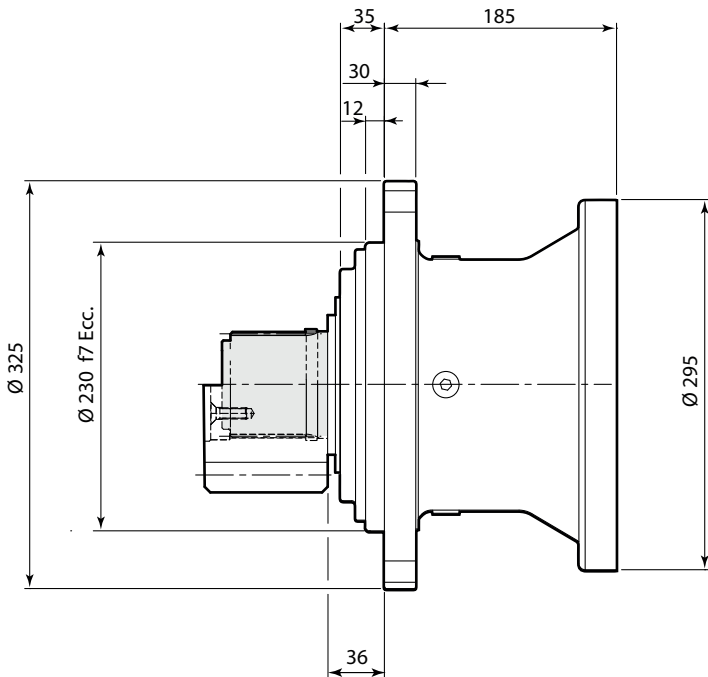
| Supporto Support | m | z | x | ØDE | BU | a | S | t | Tmax | |
|---------------------|------|----|-----|--------|------|------|--------------------|---------------|-------|-------------|
| | [mm] | | | | | | | | | Static [Nm] |
| Tecc | 8 | 14 | 0 | 128 | 79.5 | 11.5 | DIN 5482 B70x64 | M10 (n° 3) | 10500 | 9450 |
| | 9 | 15 | 0 | 152.64 | 101 | 6.5 | - | - | 12500 | 11250 |
| | 10 | 14 | 0.5 | 169 | 90 | 1.5 | DIN 5482 B70x64 | M10 (n° 3) | 14500 | 13050 |
| | 12 | 13 | 0.5 | 192 | 95 | 32.5 | | | 13500 | 12150 |
| | 14 | 15 | 0.5 | 250.6 | 105 | 1.5 | | | 21000 | 18900 |
| TRecc | 8 | 15 | 0.3 | 140 | 80 | 13.5 | DIN 5482 B70x64 | M10 (n° 3) | 15200 | 13680 |
| | 10 | 13 | 0.5 | 160 | 90 | 5.5 | - | - | 17800 | 16020 |
| | 10 | 18 | 0 | 198 | 80 | 5.5 | - | - | 23800 | 21420 |
| | 12 | 12 | 0.5 | 180 | 100 | 3.5 | DIN 5482 B70x64 | M10 (n° 3) | 19000 | 17100 |
| | 12 | 14 | 0.5 | 199 | 100 | 33.5 | | | 16000 | 14400 |

Pignone calettato / Splined pinion
 Pignone integrale / Integral pinion

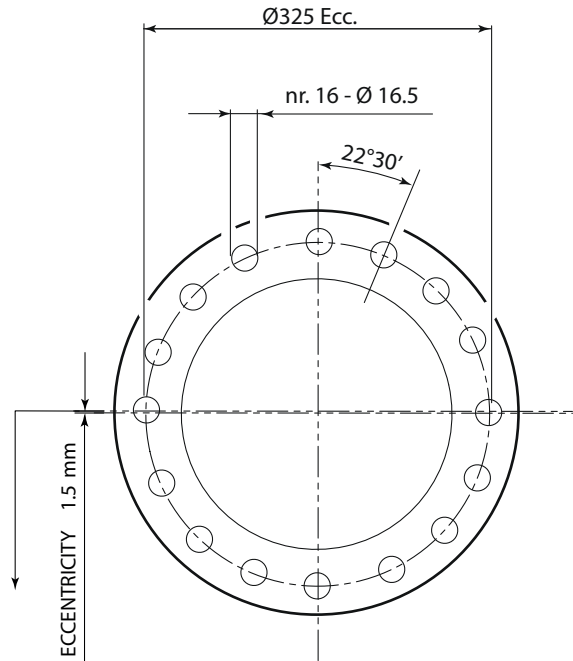
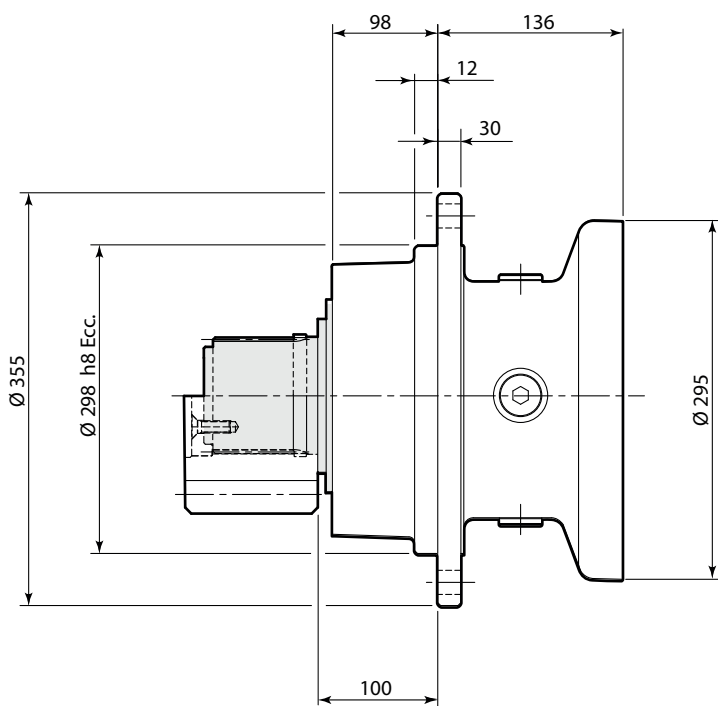
Supporto / Support: TR



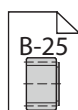
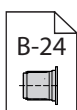
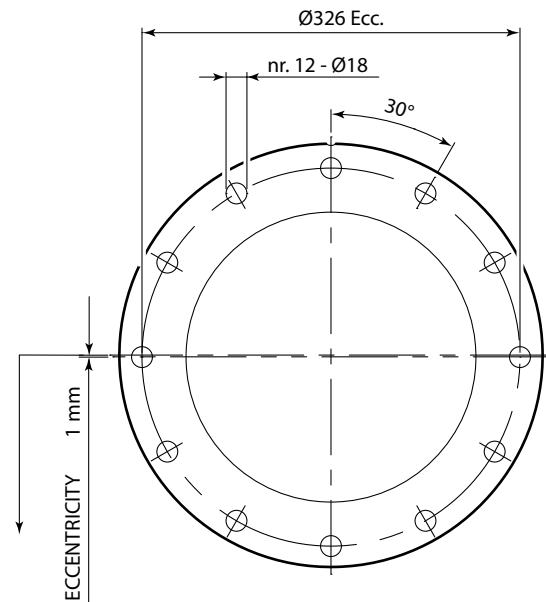
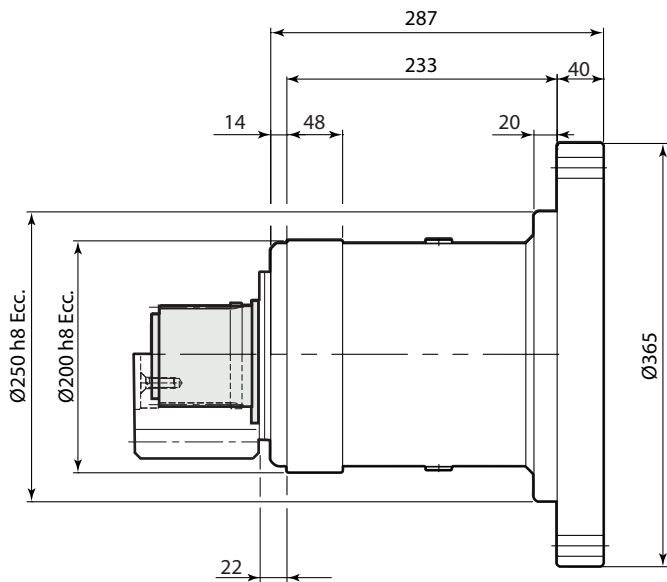
Supporto / Support: T6ecc



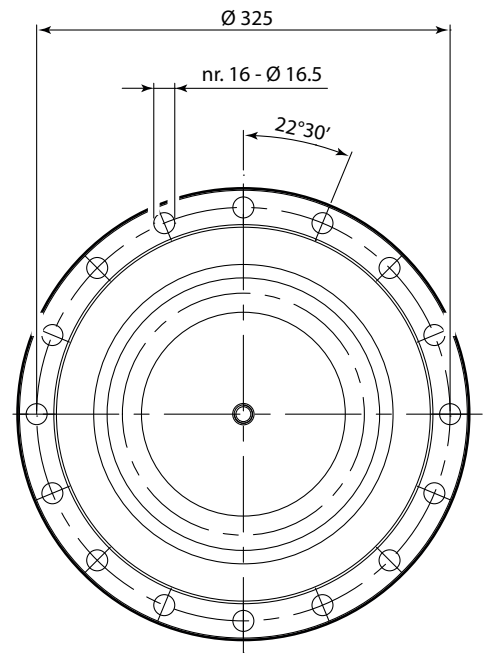
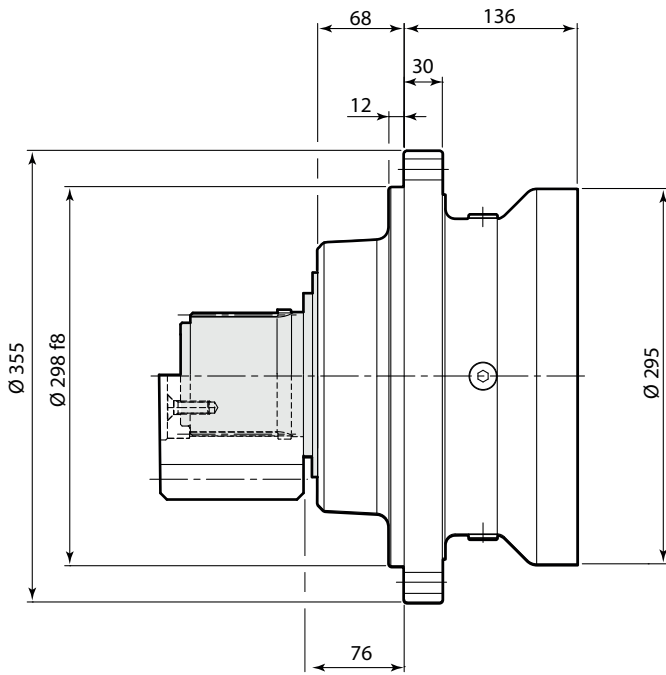
Supporto / Support: DBS



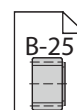
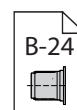
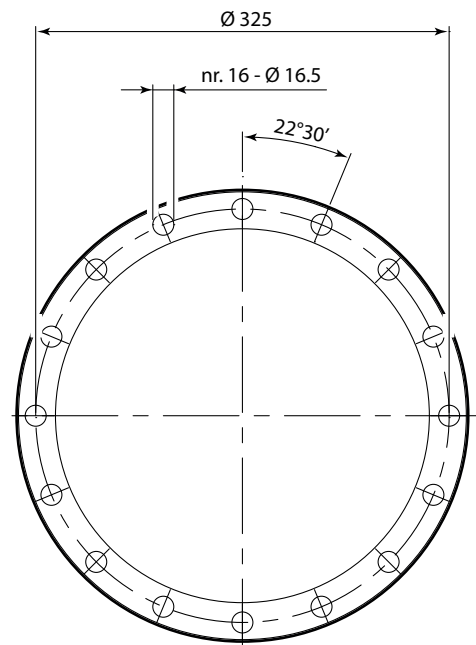
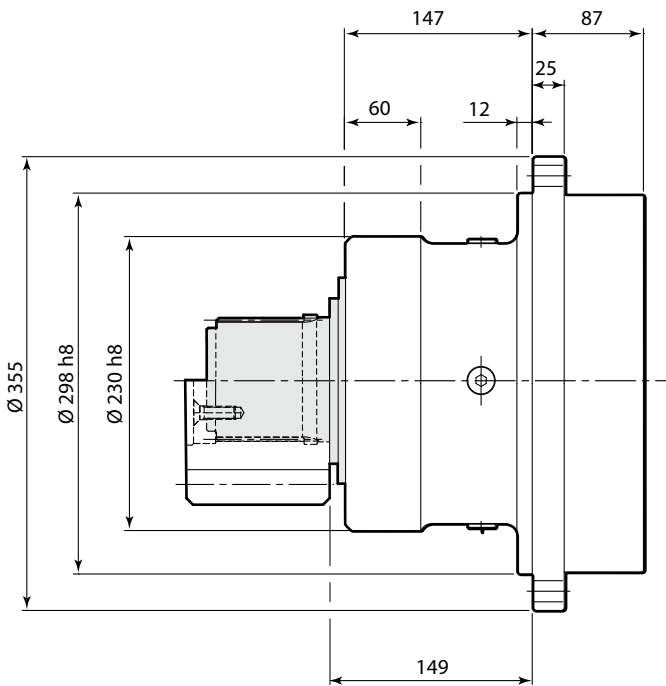
Supporto / Support: Z



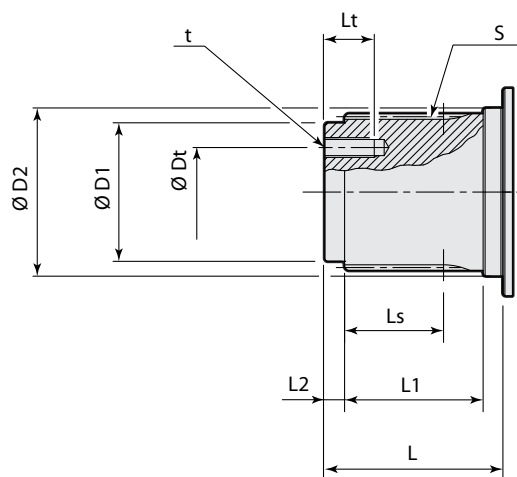
Supporto / Support: DBS4



Supporto / Support: DBT

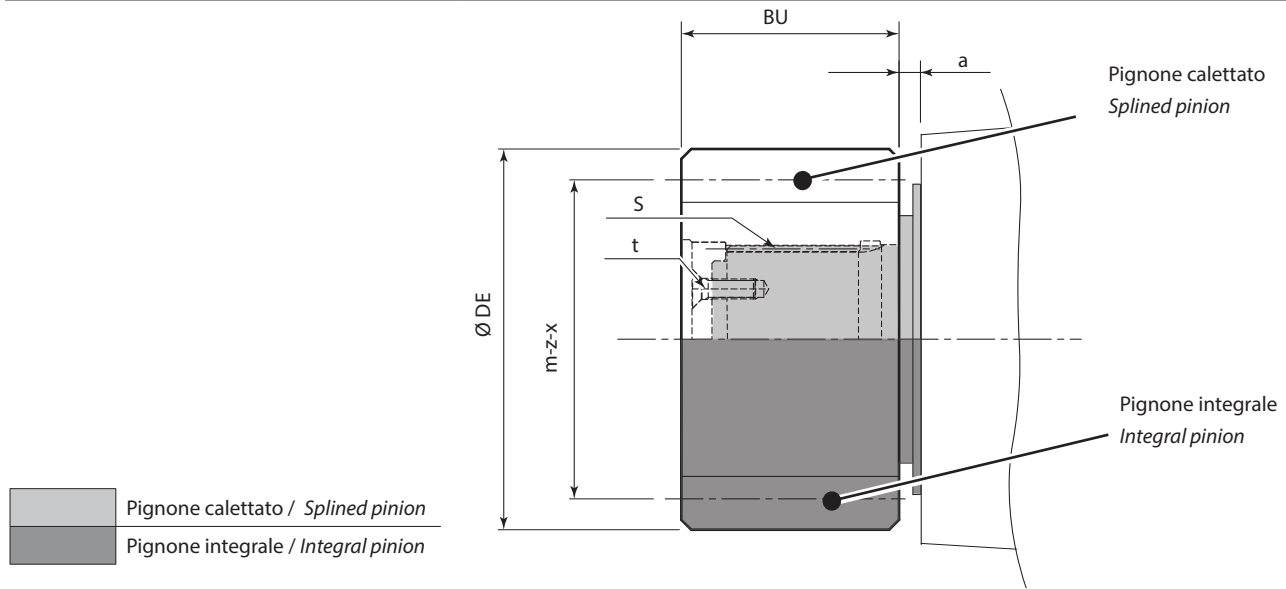


Albero / Shaft:



| Supporto Support | $\varnothing D1$ | $\varnothing D2$ | S | Ls | L | L1 | L2 | t | $\varnothing Dt$ | Lt |
|---------------------|------------------|------------------|--------------------|----|----|----|----|---------------|------------------|----|
| | [mm] | | | | | | | | | |
| TR | 70 f7 | 85 f7 | DIN 5482 B80x74 | 50 | 90 | 70 | 10 | M10 (n° 3) | 45 | 25 |
| T6ecc | 70 f7 | 85 f7 | DIN 5482 B80x74 | 50 | 90 | 70 | 10 | M10 (n° 3) | 45 | 25 |
| DBS | 70 f7 | 85 f7 | DIN 5482 B80x74 | 50 | 90 | 70 | 10 | M10 (n° 3) | 45 | 25 |
| Z | 70 f7 | 85 f7 | DIN 5482 B80x74 | 50 | 90 | 70 | 10 | M10 (n° 3) | 45 | 25 |
| DBS4 | 70 f7 | 85 f7 | DIN 5482 B80x74 | 50 | 90 | 70 | 10 | M10 (n° 3) | 45 | 25 |
| DBT | 70 f7 | 85 f7 | DIN 5482 B80x74 | 50 | 90 | 70 | 10 | M10 (n° 3) | 45 | 25 |

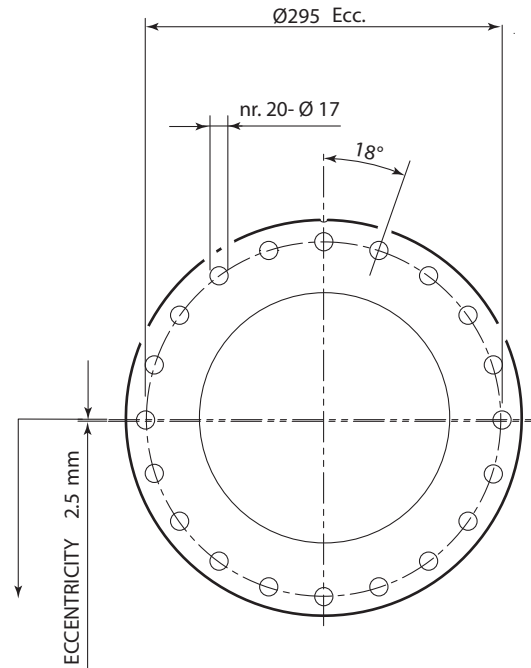
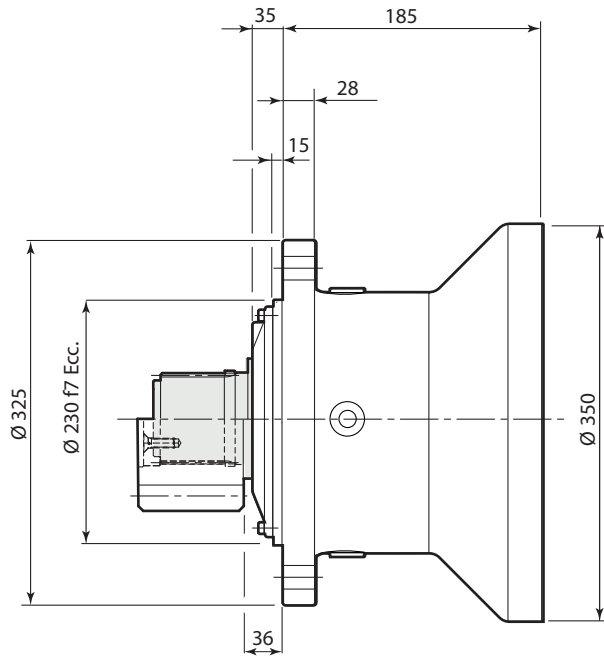
Pignoni / Pinions:



Pignone calettato / Splined pinion
 Pignone integrale / Integral pinion

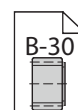
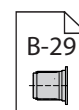
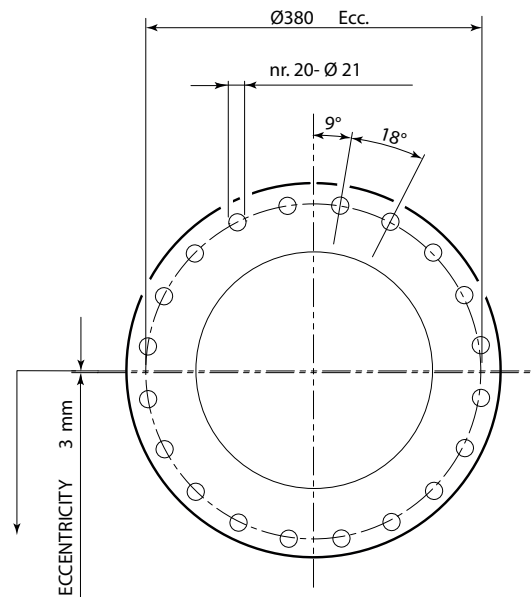
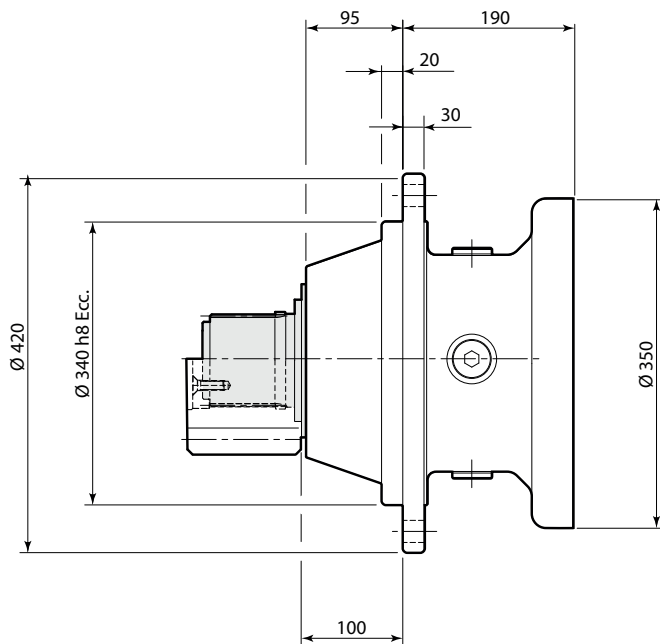
| Supporto Support | m | z | x | ØDE | BU | a | S | t | Tmax | |
|---------------------|------|-----|-------|--------|-----|--------------------|--------------------|---------------|-------|----------------|
| | [mm] | | | | | | | | | Static [Nm] |
| TR | 8 | 17 | 0.3 | 156 | 101 | 13 | DIN 5482 B80x74 | M10 (n° 3) | 18300 | 16470 |
| | 10 | 18 | 0.5 | 208 | 71 | 3 | - | - | 28000 | 25200 |
| | 12 | 11 | 0.5 | 167 | 90 | 33 | DIN 5482 | M10 | 16500 | 14850 |
| | 14 | 12 | 0.5 | 208.6 | 140 | 3 | B80x74 | (n° 3) | 22500 | 20250 |
| T6ecc | 10 | 11 | 0.5 | 140 | 80 | 35 | - | - | 12500 | 11250 |
| | 10 | 12 | 0.5 | 150 | 110 | 14.5 | - | - | 14000 | 12600 |
| | 12 | 16 | 0 | 214 | 90 | 6 | DIN 5482 B80x74 | M10 (n° 3) | 22500 | 20250 |
| | 14 | 12 | 0.5 | 210 | 120 | 1 | | | 20500 | 18450 |
| | 16 | 12 | 0.5 | 240 | 136 | 6 | | | 22000 | 19800 |
| DBS DBT | 8 | 17 | 0 | 152 | 101 | 12 | DIN 5482 | M10 | 17000 | 15300 |
| | 10 | 15 | 0.5 | 179 | 90 | 27 | B80x74 | (n° 3) | 19000 | 17100 |
| | 10 | 14 | 0.5 | 169 | 90 | 8 | - | - | 20000 | 18000 |
| | 12 | 11 | 0.5 | 166.8 | 85 | 2 | - | - | 19500 | 17550 |
| | 12 | 12 | 0.5 | 177.33 | 88 | 2 | - | - | 21300 | 19170 |
| | 12 | 12 | 0.65 | 182.4 | 120 | 2 | - | - | 20000 | 18000 |
| | 12 | 14 | 0.5 | 199 | 111 | 2 | DIN 5482 B80x74 | M10 (n° 3) | 23000 | 20700 |
| | 12 | 17 | 0 | 228 | 90 | 11 | | | 26000 | 23400 |
| | 14 | 11 | 0.5 | 194.6 | 115 | 2 | | | 21000 | 18900 |
| | 14 | 12 | 0.5 | 208.6 | 140 | 2 | | | 21500 | 19350 |
| | 14 | 11 | 0.5 | 192.36 | 88 | 2 | - | - | 23000 | 20700 |
| | 16 | 10 | 0.5 | 204.8 | 120 | 2 | DIN 5482 B80x74 | M10 (n° 3) | 22000 | 19800 |
| | 16 | 12 | 0.5 | 240 | 135 | 2 | - | - | 25000 | 22500 |
| 18 | 13 | 0.5 | 288 | 120 | 2 | DIN 5482 B80x74 | M10 (n° 3) | 31500 | 28350 | |
| Z | 10 | 12 | 0.2 | 144 | 90 | 21 | - | - | 19500 | 17550 |
| | 12 | 11 | 0.5 | 167 | 100 | 28 | DIN 5482 B80x74 | M10 (n° 3) | 20500 | 18450 |
| | 12 | 17 | 0 | 228 | 90 | 19 | | | 31500 | 28350 |
| | 14 | 12 | 0.5 | 210 | 135 | 8 | | | 26000 | 23400 |
| | 16 | 10 | 0.5 | 204.8 | 120 | 8 | - | - | 27500 | 24750 |
| DBS4 | 8 | 17 | 0.3 | 156 | 101 | 18 | DIN 5482 | M10 | 15500 | 13950 |
| | 10 | 14 | 0.32 | 162.4 | 90 | 21 | B80x74 | (n° 3) | 16000 | 14400 |
| | 12 | 15 | 0.425 | 214.2 | 110 | 8 | - | - | 21500 | 19350 |
| | 14 | 15 | 0.544 | 253 | 100 | 2 | - | - | 27000 | 24300 |
| | 16 | 12 | 0.5 | 240 | 100 | 8 | DIN 5482 | M10 | 24000 | 21600 |
| | 18 | 10 | 0.5 | 234 | 157 | 8 | B80x74 | (n° 3) | 19500 | 17550 |

Supporto / Support: Tecc



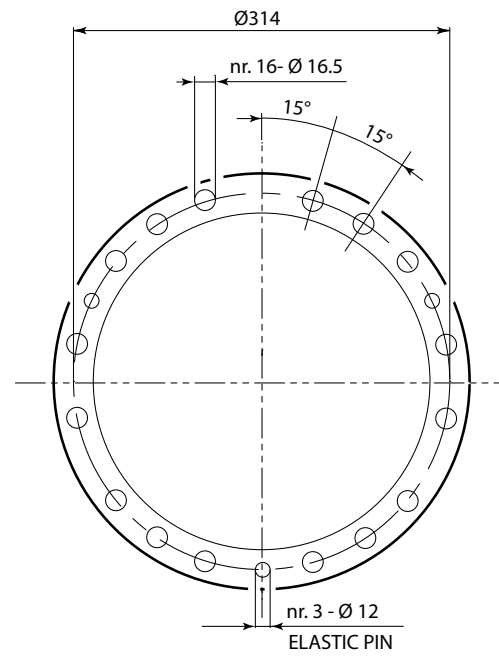
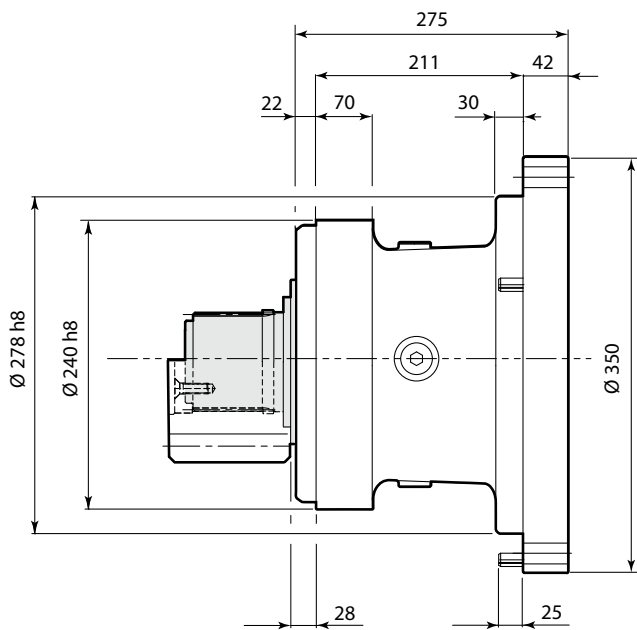
T_{2FEM}
18800 ÷ 33500 Nm
20900 ÷ 41300 Nm

Supporto / Support: DBS

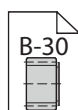
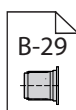
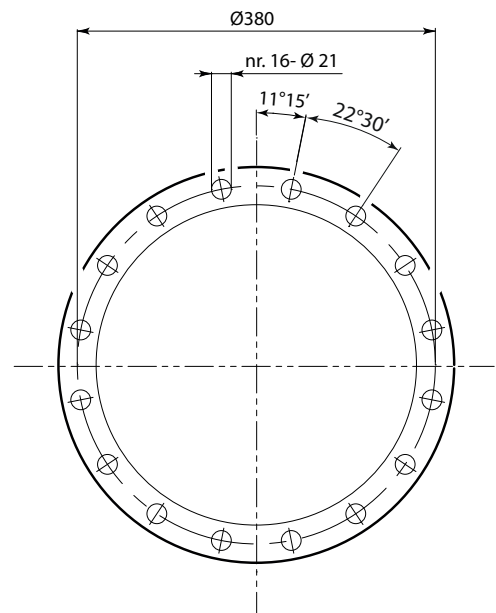
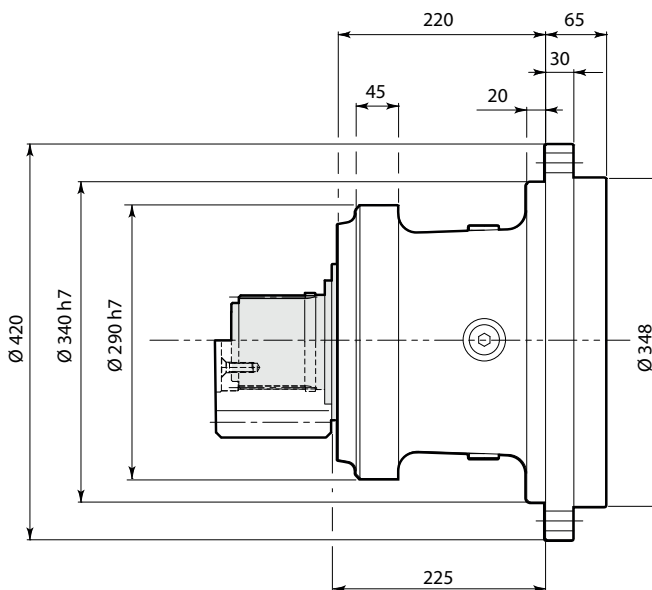


T_{2FEW}
18800 ÷ 33500 Nm
20900 ÷ 41300 Nm

Supporto / Support: Z

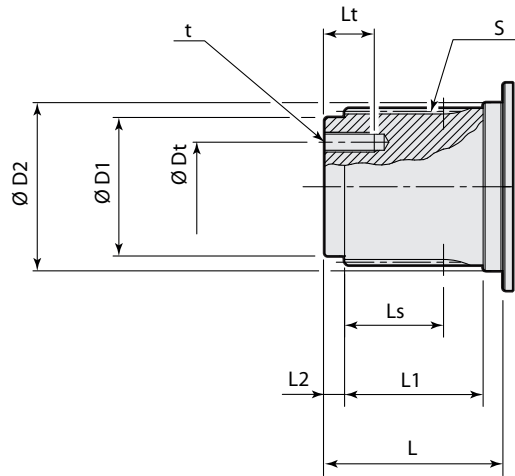


Supporto / Support: DBT



Albero / Shaft:

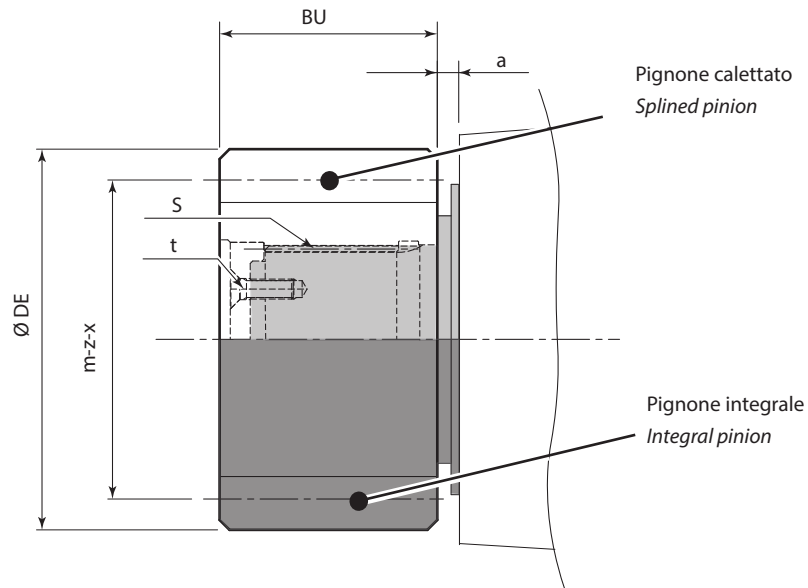
T_{2FEW}
18800 ÷ 33500 Nm
20900 ÷ 41300 Nm



| Supporto Support | $\varnothing D1$ | $\varnothing D2$ | S | Ls | L | L1 | L2 | t | $\varnothing Dt$ | Lt |
|---------------------|------------------|------------------|---------------------|----|-----|----|----|---------------|------------------|----|
| | [mm] | | | | | | | | | |
| Tecc | 70 f7 | 85 f7 | DIN 5482 B80x74 | 50 | 90 | 70 | 10 | M10 (n° 3) | 45 | 25 |
| DBS | 70 f7 | 85 f7 | DIN 5482 B80x74 | 50 | 90 | 70 | 10 | M10 (n° 3) | 45 | 25 |
| Z | 85 h7 | 105 h7 | DIN 5482 B100x94 | 65 | 110 | 85 | 12 | M10 (n° 3) | 52 | 30 |
| DBT | 70 f7 | 85 f7 | DIN 5482 B80x74 | 50 | 90 | 70 | 10 | M10 (n° 3) | 45 | 25 |

T_{2FEEM}
18800 ÷ 33500 Nm
20900 ÷ 41300 Nm

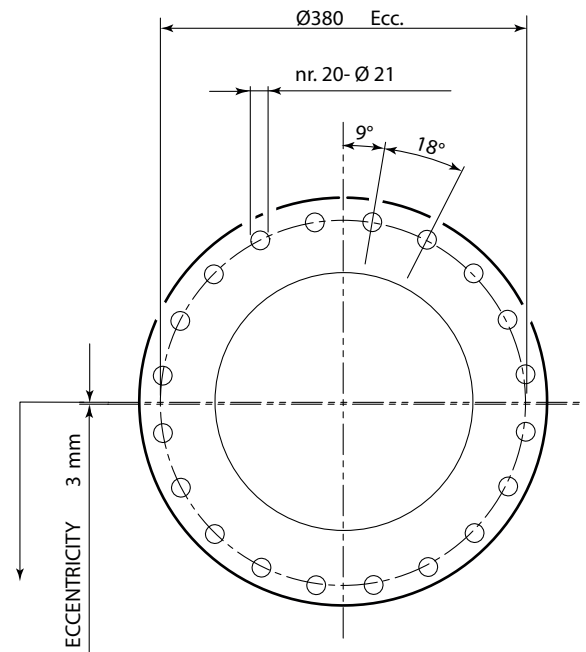
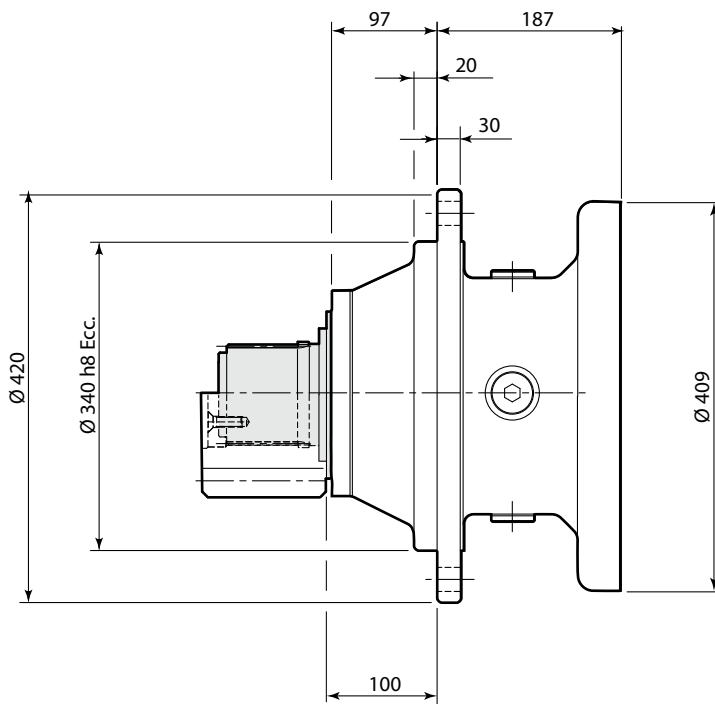
Pignoni / Pinions:



| Supporto Support | m | z | x | ØDE | BU | a | S | t | Tmax | |
|---------------------|----|----|--------|-------|-----|----|---------------------|---------------|-------------|--------------|
| | | | | | | | | | Static [Nm] | Dynamic [Nm] |
| [mm] | | | | | | | | | | |
| Tecc | 8 | 17 | 0.3 | 156 | 101 | 11 | DIN 5482 B80x74 | M10 (n° 3) | 16700 | 15030 |
| | 10 | 15 | 0 | 170 | 90 | 26 | | | 16000 | 14400 |
| | 12 | 12 | 0.5 | 180 | 100 | 1 | | | 18700 | 16830 |
| | 12 | 15 | 0.5 | 214.8 | 110 | 23 | | | 20000 | 18000 |
| | 14 | 11 | 0.5 | 192.3 | 97 | 1 | | | 20000 | 18000 |
| | 16 | 10 | 0.5 | 204.8 | 115 | 1 | | | 20000 | 18000 |
| DBS DBT | 10 | 14 | 0.32 | 162.4 | 103 | 18 | DIN 5482 B80x74 | M10 (n° 3) | 28500 | 25650 |
| | 10 | 14 | 0.5 | 169 | 90 | 5 | - | - | 31500 | 28350 |
| | 12 | 12 | 0.5 | 180 | 90 | 5 | - | - | 33000 | 29700 |
| | 14 | 11 | 0.5 | 192.3 | 97 | 5 | - | - | 34700 | 31230 |
| | 14 | 13 | 0.5 | 222.6 | 100 | 5 | - | - | 34800 | 31320 |
| | 16 | 10 | 0.5 | 203.2 | 120 | 5 | - | - | 34700 | 31230 |
| | 16 | 12 | 0.5 | 240 | 135 | 25 | - | - | 34800 | 31320 |
| | 16 | 13 | 0.2754 | 248.8 | 165 | 5 | - | - | 34800 | 31320 |
| | 18 | 12 | 0.5 | 266 | 138 | 7 | - | - | 34800 | 31320 |
| | 18 | 10 | 0.5 | 230.4 | 138 | 5 | - | - | 34800 | 31320 |
| Z | 10 | 18 | 0 | 200 | 100 | 21 | - | - | 29000 | 26100 |
| | 14 | 13 | 0.5 | 222.6 | 122 | 6 | DIN 5482 B100x94 | M10 (n° 3) | 33000 | 29700 |
| | 16 | 10 | 0.5 | 206 | 120 | 6 | - | - | 30000 | 27000 |
| | 20 | 11 | 0.5 | 277 | 140 | 6 | - | - | 34800 | 31320 |

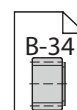
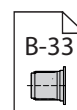
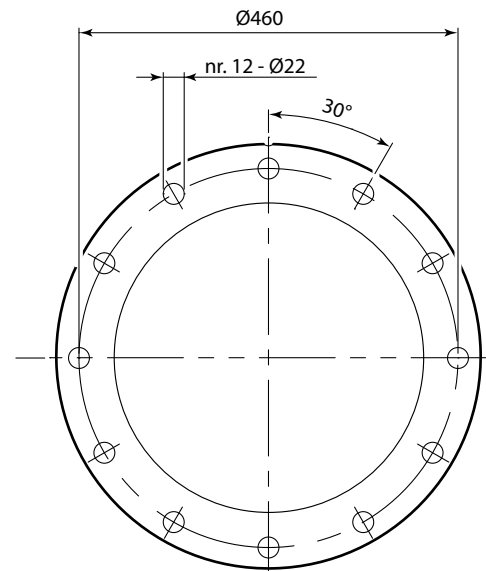
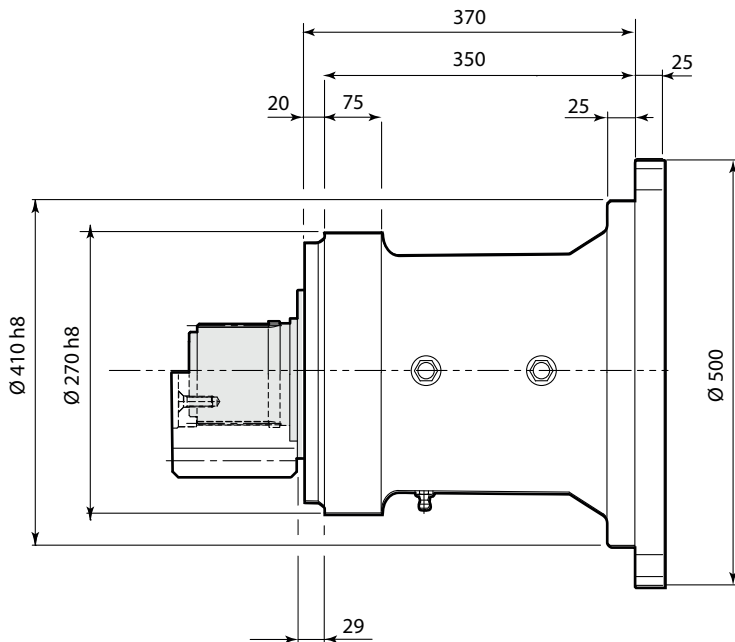
Pignone calettato / Splined pinion
 Pignone integrale / Integral pinion

Supporto / Support: DBS



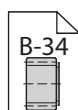
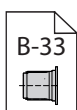
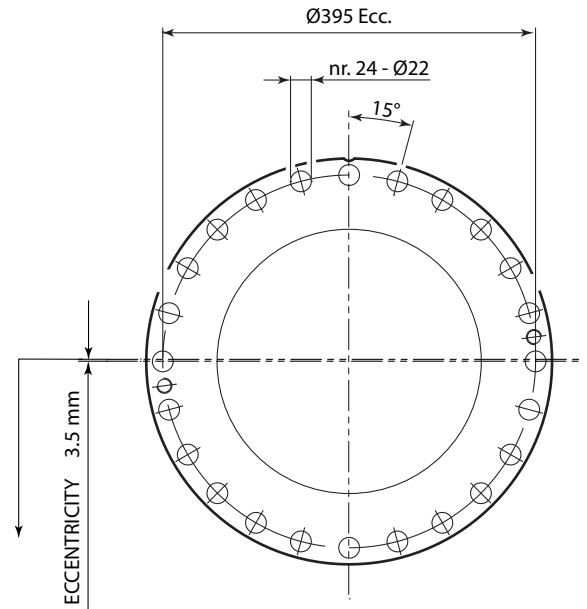
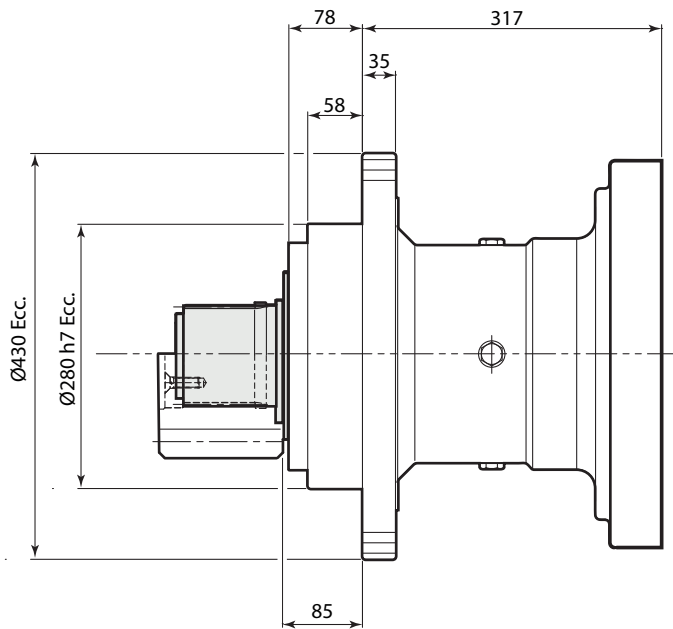
T_{2FEM}
31100 ÷ 48100 Nm
44500 ÷ 65500 Nm

Supporto / Support: Z



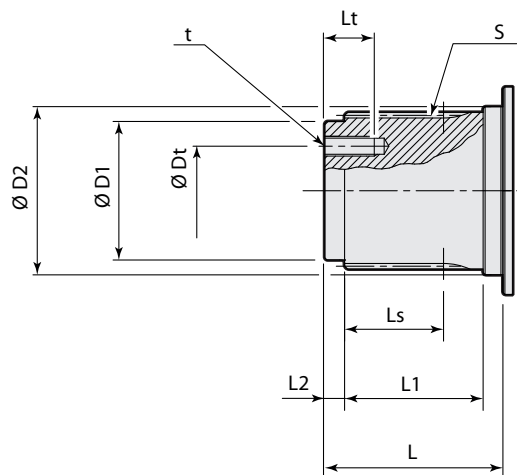
T₂FEM
31100 ÷ 48100 Nm
44500 ÷ 65500 Nm

Supporto / Support: Z1



Albero / Shaft:

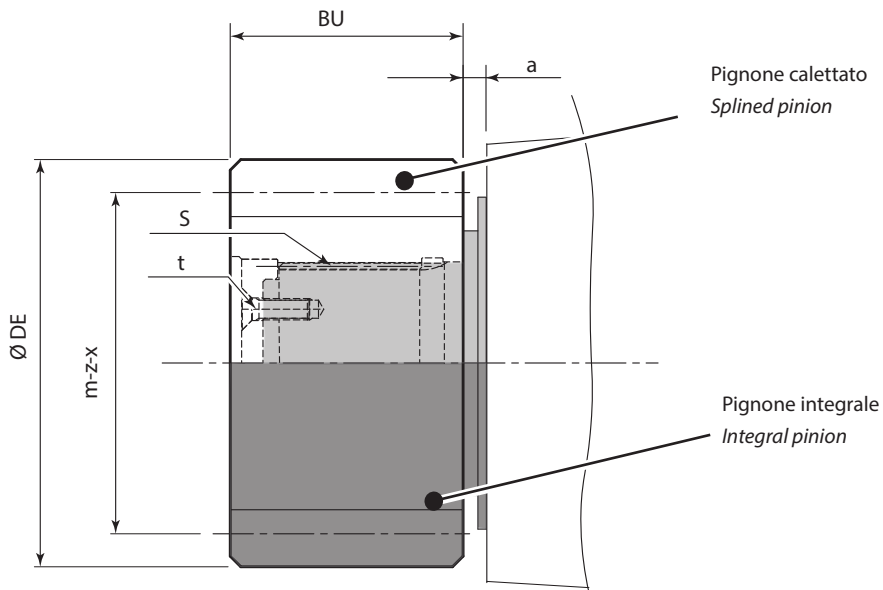
T_{2FEM}
31100 ÷ 48100 Nm
44500 ÷ 65500 Nm



| Supporto Support | $\varnothing D1$ | $\varnothing D2$ | S | Ls | L | L1 | L2 | t | $\varnothing Dt$ | Lt |
|---------------------|------------------|------------------|---------------------|----|-----|----|----|---------------|------------------|----|
| | [mm] | | | | | | | | | |
| DBS | 85 f7 | 105 f7 | DIN 5482 B100x94 | 65 | 110 | 85 | 12 | M14 (n° 3) | 52 | 30 |
| Z | 85 f7 | 105 f7 | DIN 5482 B100x94 | 65 | 110 | 85 | 12 | M14 (n° 3) | 52 | 30 |
| Z1 | 85 f7 | 105 f7 | DIN 5482 B100x94 | 65 | 110 | 85 | 12 | M14 (n° 3) | 52 | 30 |

T_{2FEM}
31100 ÷ 48100 Nm
44500 ÷ 65500 Nm

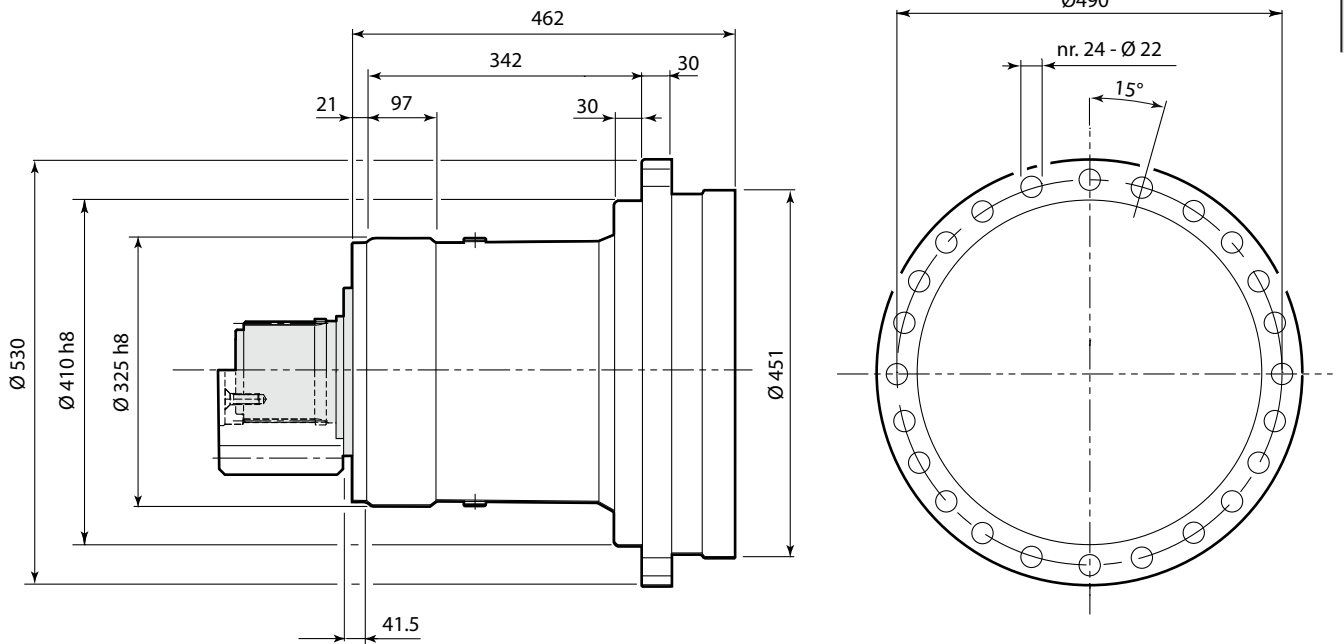
Pignoni / Pinions:



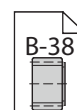
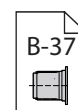
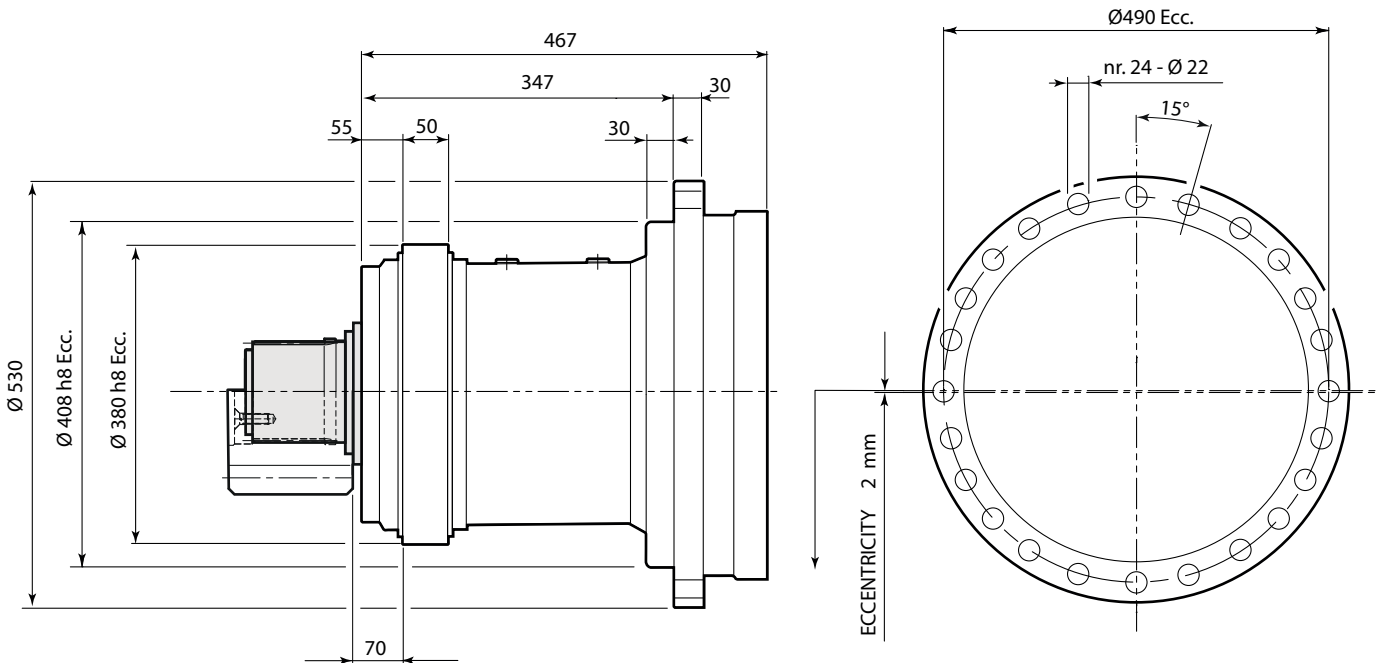
| Supporto Support | m | z | x | ØDE | BU | a | S | t | Tmax | |
|---------------------|----|----|------|-------|-----|------|---------------------|---------------|-------------|--------------|
| | | | | | | | | | Static [Nm] | Dynamic [Nm] |
| [mm] | | | | | | | | | | |
| DBS | 12 | 16 | 0.5 | 226.8 | 105 | 76 | DIN 5482 | M14 | 35500 | 31950 |
| | 14 | 12 | 0.5 | 210 | 135 | 3 | B100x94 | (n° 3) | 38500 | 34650 |
| | 16 | 11 | 0.5 | 224.4 | 130 | 3 | - | - | 41000 | 36900 |
| | 16 | 13 | 0.5 | 256 | 160 | 3 | - | - | 45500 | 40950 |
| | 18 | 13 | 0.5 | 288 | 140 | 3 | DIN 5482 | M14 | 53000 | 47700 |
| | 18 | 15 | 0.45 | 322.2 | 140 | 8.5 | B100x94 | (n° 3) | 59000 | 53100 |
| | 20 | 12 | 0.5 | 298 | 150 | 3 | - | - | 54000 | 48600 |
| Z | 20 | 14 | 0.5 | 339 | 130 | 57 | DIN 5482 B100x94 | M14 (n° 3) | 53500 | 48150 |
| | 12 | 15 | 0.3 | 211.5 | 105 | 27 | DIN 5482 B100x94 | M14 (n° 3) | 66500 | 59850 |
| | 14 | 13 | 0.5 | 222.4 | 125 | 5 | - | - | 55000 | 49500 |
| | 16 | 14 | 0.5 | 266 | 160 | 5 | - | - | 56000 | 50400 |
| | 18 | 10 | 0.5 | 234 | 170 | 3 | - | - | 50000 | 45000 |
| Z1 | 18 | 15 | 0.45 | 322.2 | 140 | 14.5 | DIN 5482 B100x94 | M14 (n° 3) | 70200 | 63180 |
| | 12 | 15 | 0.3 | 211.5 | 105 | 23 | DIN 5482 B100x94 | M14 (n° 3) | 68000 | 61200 |
| | 16 | 10 | 0.5 | 206.4 | 170 | 5 | - | - | 59000 | 53100 |
| | 16 | 12 | 0.5 | 240 | 140 | 5 | - | - | 70200 | 63180 |
| | 16 | 14 | 0.4 | 268.8 | 140 | 5 | - | - | 70200 | 63180 |
| | 18 | 10 | 0.5 | 230.4 | 180 | 5 | - | - | 63000 | 56700 |
| | 18 | 12 | 0.5 | 260 | 145 | 5 | - | - | 70200 | 63180 |

| | |
|--|-------------------------------------|
| | Pignone calettato / Splined pinion |
| | Pignone integrale / Integral pinion |

Supporto / Support: Z2

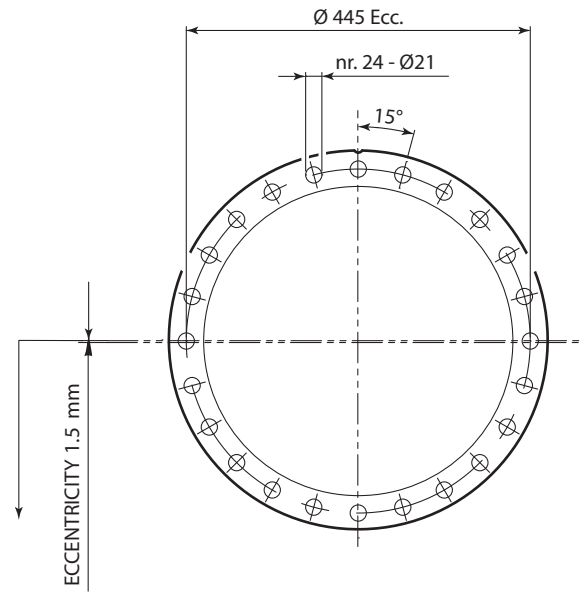
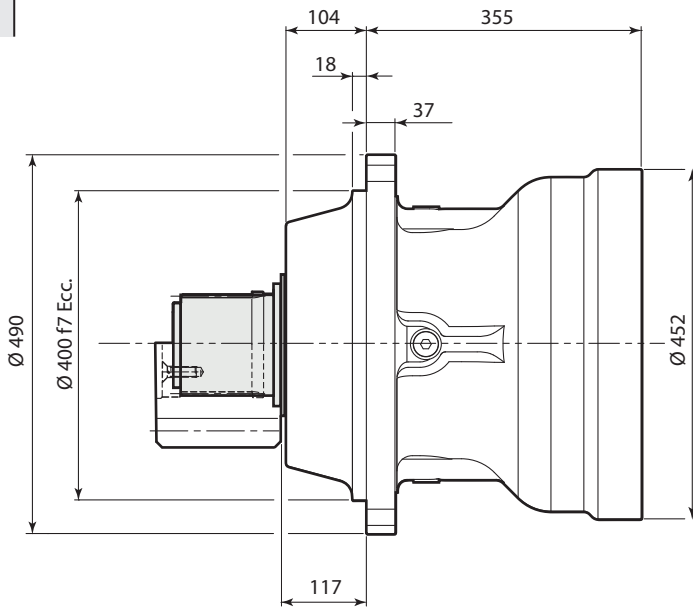


Supporto / Support: Z3

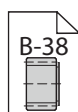
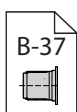
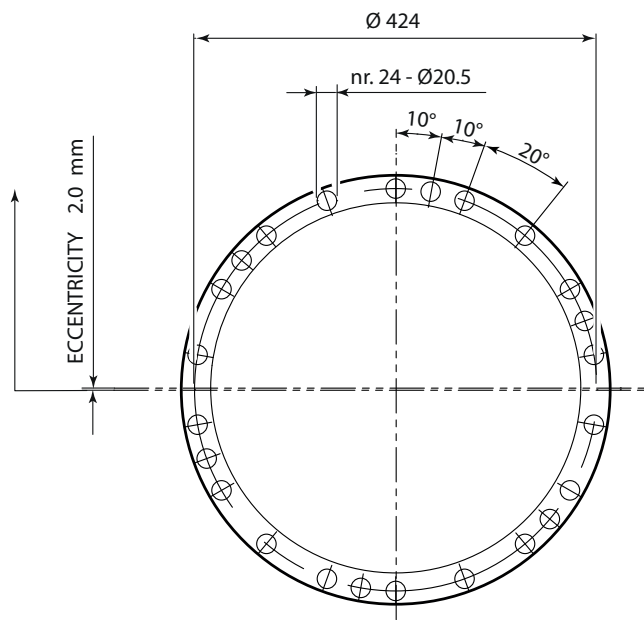
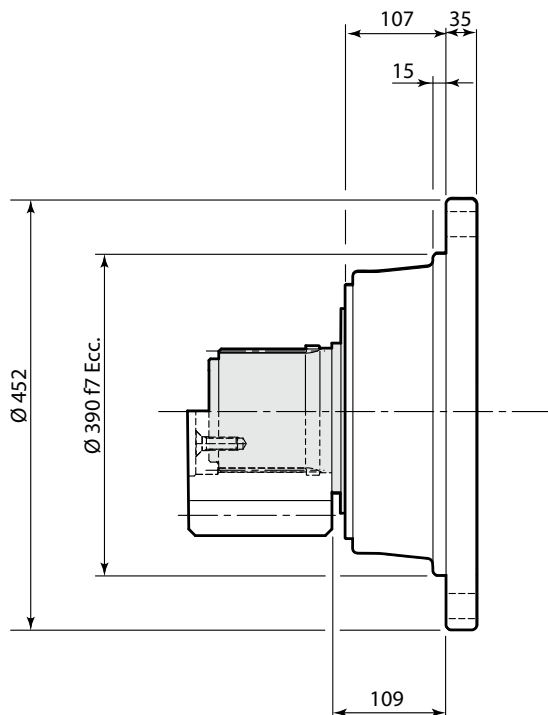


T_{2FEM}
47500 ÷ 71800 Nm
71000 ÷ 105000 Nm

Supporto / Support: DBS1

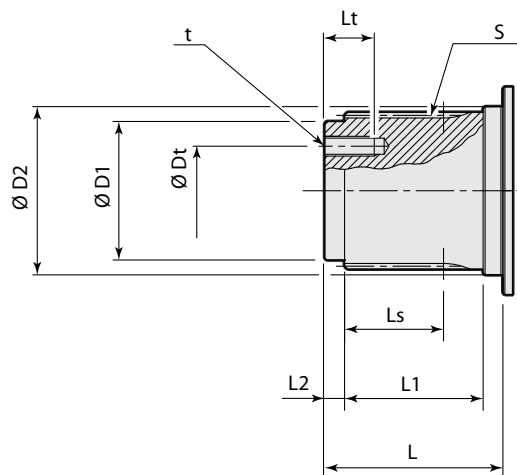


Supporto / Support: HR



Albero / Shaft:

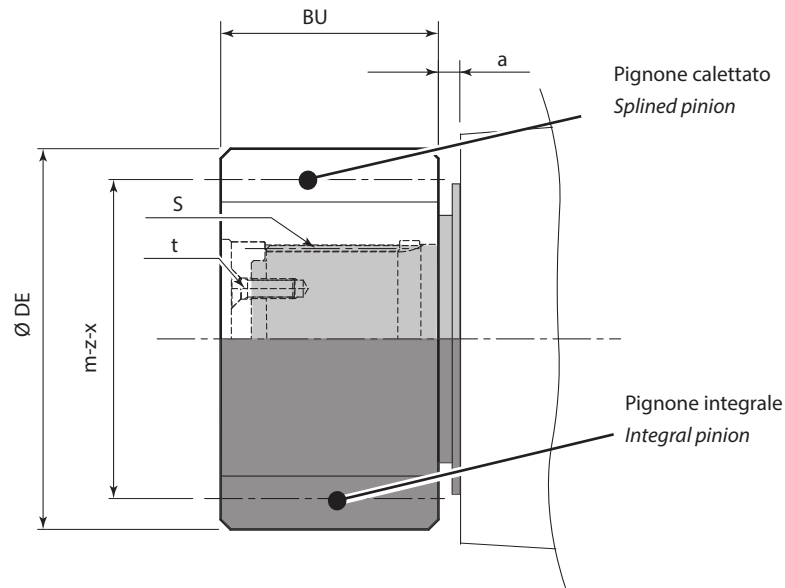
T₂FEM
47500 ÷ 71800 Nm
71000 ÷ 105000 Nm



| Supporto Support | $\varnothing D1$ | $\varnothing D2$ | S | Ls | L | L1 | L2 | t | $\varnothing Dt$ | Lt |
|---------------------|------------------|------------------|--------------------|------|-----|-----|----|---------------|------------------|----|
| | [mm] | | | | | | | | | |
| Z2 | 90 f7 | 124 f7 | DIN 5480 W120x3 | 95 | 136 | 111 | 15 | M16 (n° 3) | 50 | 30 |
| Z3 | 90 f7 | 124 f7 | DIN 5480 W120x3 | 95 | 136 | 111 | 15 | M16 (n° 3) | 50 | 30 |
| DBS1 | 125 f7 | 151 f7 | DIN 5480 W150x5 | 107 | 150 | 124 | 12 | M16 (n° 3) | 80 | 35 |
| HR | 90 f7 | 124 f7 | DIN 5480 W120x3 | 95 | 136 | 111 | 15 | M16 (n° 3) | 50 | 30 |

T_{2FEEM}
47500 ÷ 71800 Nm
71000 ÷ 105000 Nm

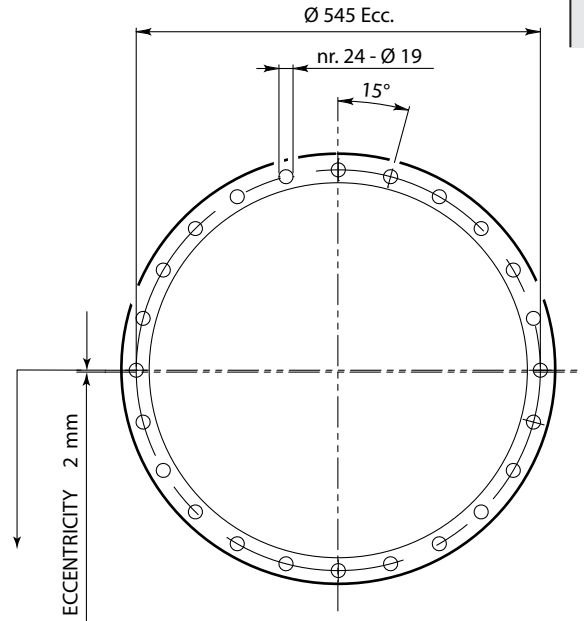
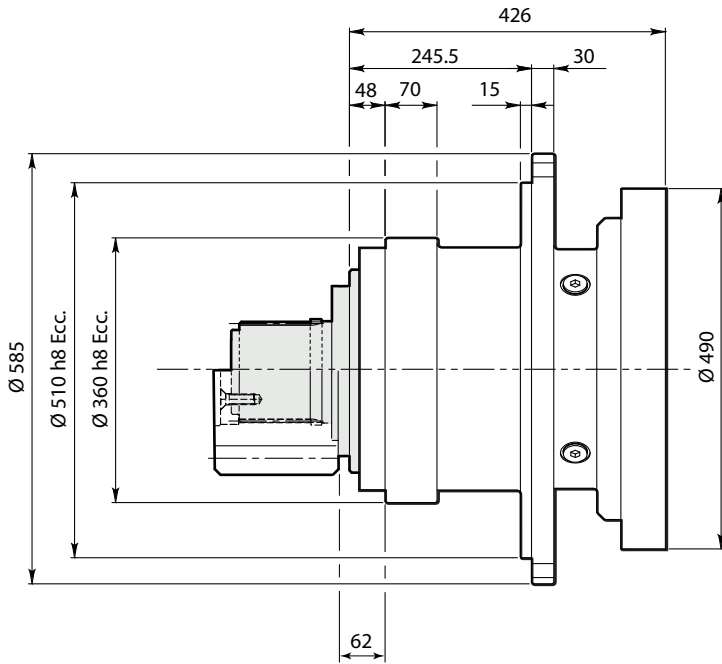
Pignoni / Pinions:



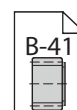
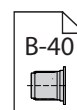
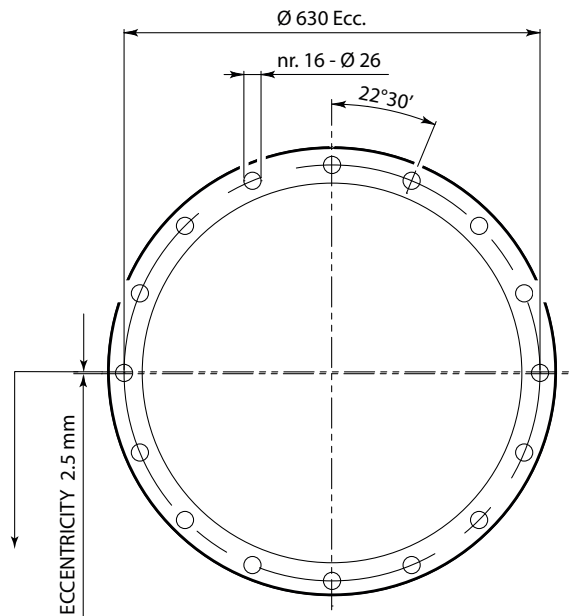
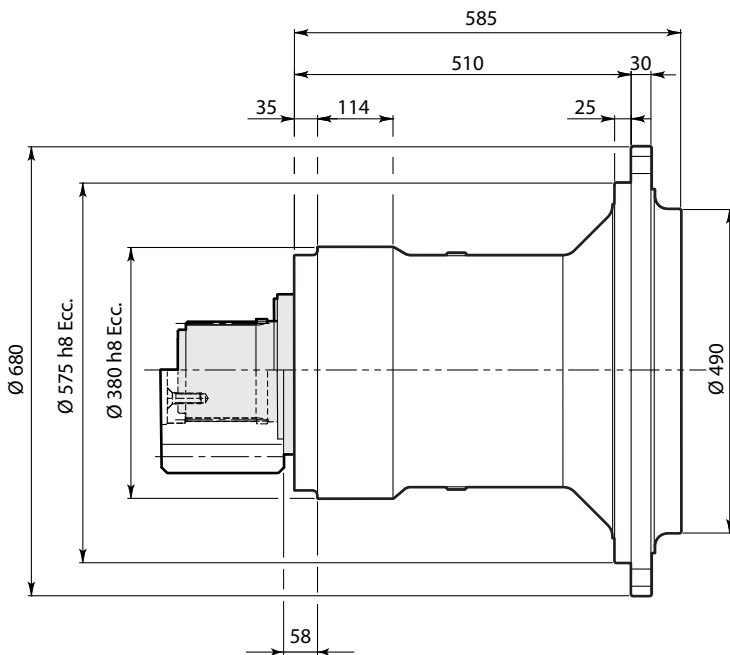
| Supporto <i>Support</i> | m | z | x | ØDE | BU | a | S | t | Tmax | |
|----------------------------|----|-----|------|-------|-----|-------|--------------------|---------------|-------------|--------------|
| | | | | | | | | | Static [Nm] | Dynamic [Nm] |
| [mm] | | | | | | | | | | |
| Z2 | 16 | 14 | 0.5 | 270 | 150 | 5 | - | - | 110000 | 99000 |
| | 16 | 17 | 0.5 | 320 | 160 | 15 | - | - | 98000 | 88200 |
| | 20 | 12 | 0.5 | 297 | 150 | 5 | - | - | 117000 | 105300 |
| | 20 | 13 | 0.5 | 320 | 145 | 25 | - | - | 100000 | 90000 |
| | 22 | 12 | 0.5 | 327.8 | 220 | 15 | - | - | 113000 | 101700 |
| | 22 | 14 | 0.5 | 374 | 225 | 15 | - | - | 120000 | 108000 |
| Z3 | 16 | 14 | 0.5 | 270 | 150 | 5 | - | - | 110000 | 99000 |
| | 20 | 12 | 0.5 | 297 | 150 | 5 | - | - | 118000 | 106200 |
| | 22 | 14 | 0.5 | 374 | 180 | 25 | DIN 5480 W120x3 | M16 (n° 3) | 106000 | 95400 |
| DBS1 | 24 | 13 | 0.3 | 374.4 | 180 | 5 | - | - | 119000 | 107100 |
| | 14 | 13 | 0.5 | 224 | 150 | 7 | - | - | 90000 | 81000 |
| | 16 | 12 | 0.5 | 240 | 160 | 7 | - | - | 95000 | 85000 |
| | 16 | 21 | 0 | 368 | 155 | 13 | DIN 5480 W150x5 | M16 (n° 3) | 124000 | 111600 |
| | 18 | 12 | 0.5 | 268 | 190 | 7 | - | - | 103000 | 92700 |
| | 18 | 13 | 0.5 | 288 | 190 | 7 | - | - | 110000 | 99000 |
| | 20 | 12 | 0.5 | 297 | 150 | 32 | - | - | 113000 | 101700 |
| | 20 | 14 | 0.5 | 340 | 114 | 7 | - | - | 124000 | 111600 |
| | 20 | 15 | 0.45 | 358 | 180 | 7 | - | - | 124000 | 111600 |
| | 22 | 14 | 0.5 | 374 | 180 | 7 | - | - | 124000 | 111600 |
| HR | 24 | 12 | 0.5 | 357.6 | 180 | 7 | - | - | 124000 | 111600 |
| | 25 | 12 | 0.5 | 372.5 | 120 | 7 | - | - | 124000 | 111600 |
| | 16 | 17 | - | 304 | 135 | 9 | DIN 5480 W120x3 | M16 (n° 3) | 78000 | 70200 |
| | 20 | 11 | 0.5 | 274.8 | 155 | 12 | | | 75000 | 67500 |
| 20 | 14 | 0.5 | 340 | 130 | 47 | 76000 | | | 68400 | |
| 22 | 14 | 0.5 | 374 | 180 | 12 | 80000 | | | 72000 | |

Pignone calettato / *Splined pinion*
 Pignone integrale / *Integral pinion*

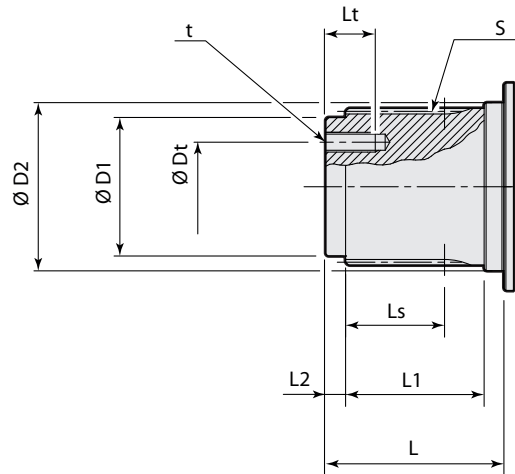
Supporto / Support: Z1



Supporto / Support: Z4

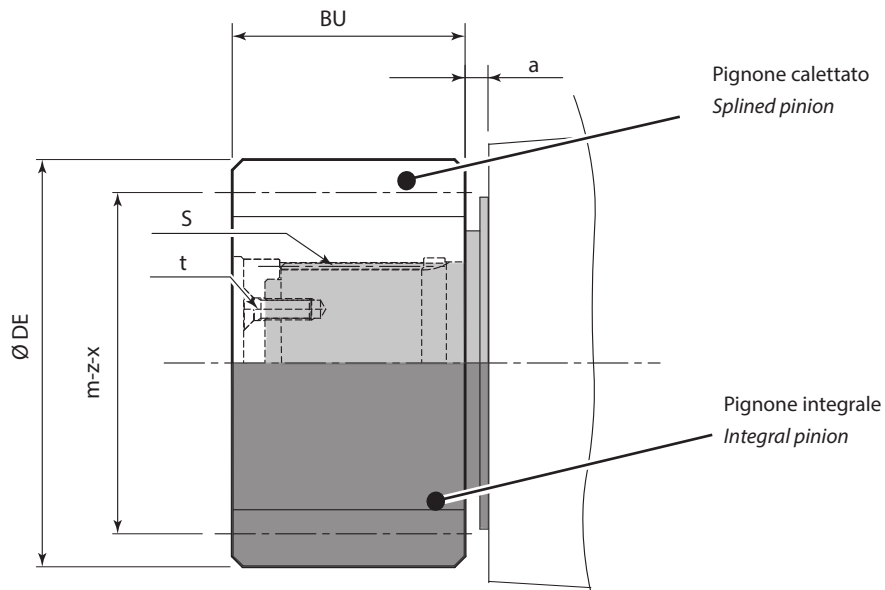


Albero / Shaft:



| Supporto Support | $\varnothing D1$ | $\varnothing D2$ | S | Ls | L | L1 | L2 | t | $\varnothing Dt$ | Lt |
|---------------------|------------------|------------------|--------------------|------|-----|-----|----|--------------|------------------|----|
| | [mm] | | | | | | | | | |
| Z1 | 125 f7 | 151 f7 | DIN 5480 W150x5 | 107 | 150 | 124 | 12 | M16 (n°3) | 80 | 35 |
| Z4 | 125 f7 | 151 f7 | DIN 5480 W150x5 | 107 | 150 | 124 | 12 | M16 (n°3) | 80 | 35 |

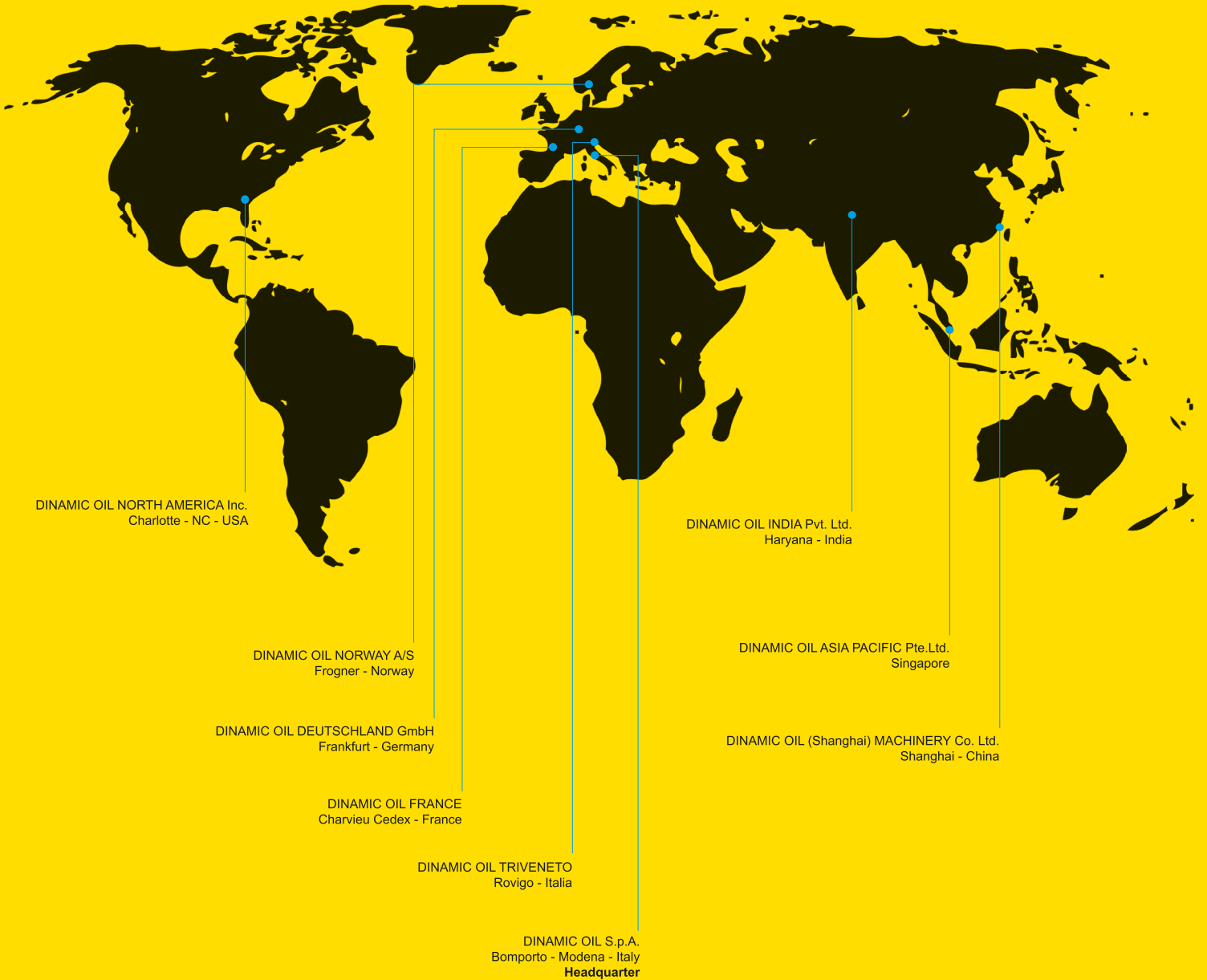
Pignoni / Pinions:



| Supporto Support | m | z | x | ØDE | BU | a | S | t | Tmax | |
|---------------------|----|----|-----|-------|-----|----|--------------------|---------------|--------|---------|
| | | | | | | | | | Static | Dynamic |
| | | | | | | | | | [Nm] | [Nm] |
| Z1 | 16 | 16 | 0.5 | 304 | 115 | 49 | DIN 5480 W150x5 | M16 (n° 3) | 110700 | 99630 |
| | 16 | 24 | 0.5 | 432 | 160 | 34 | | | 110700 | 99630 |
| | 22 | 14 | 0.5 | 369.6 | 155 | 23 | | | 110700 | 99630 |
| Z4 | 16 | 24 | 0.5 | 432 | 160 | 38 | DIN 5480 W150x5 | M16 (n° 3) | 162500 | 146250 |
| | 18 | 14 | 0.5 | 305 | 155 | 40 | - | - | 157000 | 141300 |
| | 20 | 12 | 0.5 | 300 | 150 | 10 | - | - | 162500 | 146250 |
| | 20 | 13 | 0.5 | 320 | 190 | 10 | - | - | 162500 | 146250 |
| | 22 | 14 | 0.5 | 371.8 | 260 | 10 | - | - | 162500 | 146250 |
| | 25 | 12 | 0.5 | 373 | 240 | 10 | - | - | 162500 | 146250 |

| | |
|--|--|
| | Pignone calettato / <i>Splined pinion</i> |
| | Pignone integrale / <i>Integral pinion</i> |

Branches



Dinamic Oil S.p.A.

Via Togliatti, 15
41030 Bomporto - MO - Italy
T: +39 059 812611
F: +39 059 812603
E: info@dinamicoil.it
dinamicoil.com

Dinamic Oil Deutschland GmbH

Frankfurt Straße 151 b
D - 63303 Dreieich-Sprendlingen
T: +49 (0) 6103 2024593
F: +49 (0) 6103 8077239
E: verkauf@dinamicoil.de
dinamicoil.com/deutschland

**Dinamic Oil (Shanghai)
Machinery Co., Ltd.**

Building 2, N°128 Lane 168 Dieqiao Rd.
Kangqiao Industry Park Pudong
201319 Shanghai - China
T: 0086 21 6818 7100
F: 0086 21 6818 7107
E: info@dinamicoil.com.cn
dinamicoil.com/china

Dinamic Oil India Pvt. Ltd.

Plot No.5, Sector - 16 HSIIDC
Industrial Area, Bahadurgarh
Pin Code: 124507, Haryana - India
T: +91 1276 605295, 605296
E: india@dinamicoil.com

Dinamic Oil Triveneto

Via Enrico Toti, 48
40500 Rovigo - Italy
T: +39 340 7745 664
F: +39 059 812603
E: a.coltro@dinamicoil.it
dinamicoil.com/triveneto

Dinamic Oil Norway A/S

Lindebergveien, 3
2016 Frogner - Norway
T: +47 63 82 50 40
F: +47 63 82 50 41
E: DinamicOil.Norway@dinamicoil.com
dinamicoil.com/norway

戴纳密克（上海）机械有限公司

中国上海浦东康桥工业园区
叠桥路168弄128号2栋1楼
邮编：201319
电话：0086 21 6818 7100
传真：0086 21 6818 7107
邮件：info@dinamicoil.com.cn
dinamicoil.com/china

Dinamic Oil France

ZI Montbertrand BP 3612
38236 Charvieu Cedex - France
T: +33 (0) 472 462 318
F: +33 (0) 472 462 327
E: dinamicoil@orange.fr
dinamicoil.com/france

Dinamic Oil North America Inc.

4725 Entrance Drive - Suite A
Charlotte - NC - 28273 - USA
T: +1 704 587 4600
F: +1 980 939 6297
E: info.usa@dinamicoil.com
dinamicoil.com/northamerica

Dinamic Oil Asia Pacific Pte. Ltd.

47L Tuas South Avenue, 1
637249 - Singapore
T: +65 6791 0802
F: +65 6791 2661
E: sales@dinamicoilap.com.sg
dinamicoil.com/asia